

# TECHBOOK

Office is  
where the work is

**Novelties 2023**

**ICF**



# Office is where the work is

Office space: no term has ever been so apt to define a phenomenon that is gaining ground in this post-pandemic period. The office in its most traditional sense, namely a place featuring standardised, fixed and pre-assigned workstations, is undergoing a profound transformation to become a flexible, fluid and often unstructured space that is better suited to the new reality we have been forced to accept by the pandemic.



# DuoChair

5 star base

---



**ICF**



# Design story



An innovative chair, aesthetically a winner and yet extremely simple, very comfortable and responsible in its use of materials: the new DuoChair is ICF's most efficient and effective combination of materials and design ever achieved in a task chair. The new DuoChair is designed for those who want a highly ergonomic product, but are not satisfied with purely functional elements. Those looking for well-being, comfort, and elegance. Not only: it must adapt to a flexible office space and be environmentally friendly.

DuoChair is the epitome of lightness: in the design, in research centred on materials, and in the creation of structural elements. This very lightness makes it a passepartout product that possesses all it needs for functional and comfortable use without the addition of superfluous elements, an item that ideally blends into the office without standing out.

# Specifications



**1 Supporting structure:** The rear structure in die-cast aluminum ensures maximum torsional strength, supports the backrest shell, fixes the armrests and transmits the movement geometry to the backrest and seat. Available in three different finishes: polished, chromed or painted.

**2 Backrest in mesh:** Frame with techno-polymer structure upholstered with a load-bearing and flexible mesh. 3D mesh sheet (single-colour - 100% polyester) or in elastic mesh (two-toned effect - 70% polyester elastomer, 30% polyester). The mesh sheet ensures full breathability and thorough air circulation.

**3 Backrest in fabric:** Frame with techno-polymer structure upholstered in fabric or leather. The sheet is suspended in order to distribute the body weight optimally. The leather covering includes an eco-leather back with predetermined colour combinations.

**4 Soft backrest:** The frame is entirely covered in fabric or leather to increase the feeling of comfort while maintaining the characteristics of breathability and elasticity.

**5 Seat cushion:** Seat cushion in cold moulded polyurethane foam, thickness 55 mm, with structural insert in poly-propylene. Upholstered in fabric or leather. The foam is approved in class 11M and complies with all safety and comfort standards.

**6 Armrests:** 3D armrests are adjustable in height, depth and width. The support pads of the armrests are made of integral polyurethane. The armrest support is made of black plastic material.

**7 Depth of the seat:** The seat depth adjustment is easily activated in seated position by means of an intuitive lever with 7,5 cm adjustment range.

**8 Height adjustment:** Seat height can be adjusted a maximum of 10,5 cm with a lever. The gaslift complies to EN16955:2017.

**9 Height adjustment of backrest:** Backrest height can be adjusted with a lever with 6,5 cm adjustment range.

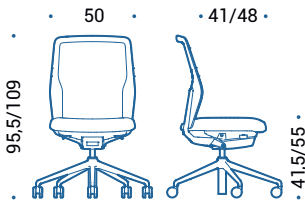
**10 Synchronised auto-fit tilting mechanism:** Synchronized mechanism with "auto-fit" system for automatic adjustment of the backrest resistance based on the weight of the user. Additional knob for the comfort tension adjustment according to individual preferences. Optional forward adjustment.

**11 Base:** Five star base made of die-cast aluminum, with a polished, chromed or painted finish depending on the structure or polyamide dyed in black.

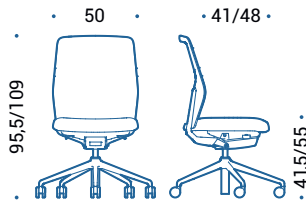
**12 Castors:** In black plastic with soft running surface for use on any type of flooring and a load depending safety brake complies to EN 12529:2001. Diam. 65 mm.



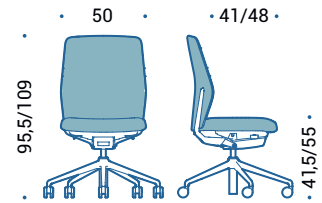
# Dimensions



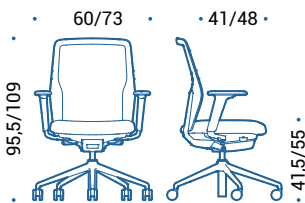
DCE.410 | swivel chair, seat height adjustable, backrest height adjustable, auto-balance synchro tilting mechanism



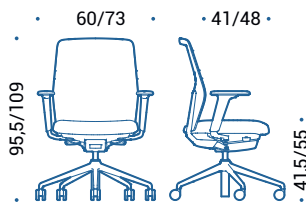
DCE.420 | swivel chair, seat height adjustable, backrest height adjustable, auto-balance synchro tilting mechanism



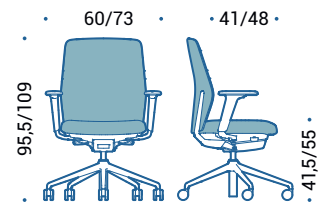
DCE.430 | swivel chair, seat height adjustable, backrest height adjustable, auto-balance synchro tilting mechanism



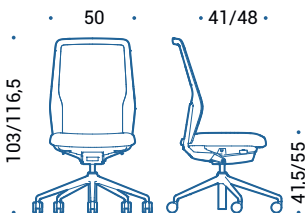
DCE.413 | swivel chair, seat height adjustable, backrest height adjustable, auto-balance synchro tilting mechanism, 3D adjustable armrests



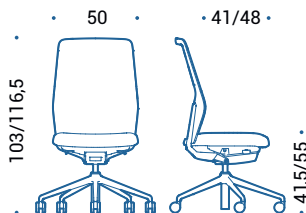
DCE.423 | swivel chair, seat height adjustable, backrest height adjustable, auto-balance synchro tilting mechanism, 3D adjustable armrests



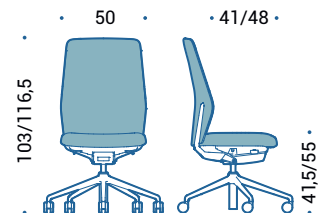
DCE.433 | swivel chair, seat height adjustable, backrest height adjustable, auto-balance synchro tilting mechanism, 3D adjustable armrests



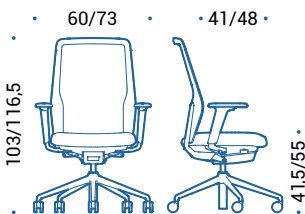
DCE.510 | swivel chair, seat height adjustable, backrest height adjustable, auto-balance synchro tilting mechanism



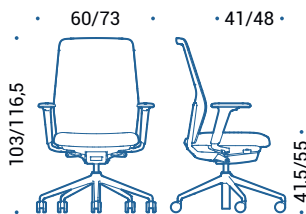
DCE.520 | swivel chair, seat height adjustable, backrest height adjustable, auto-balance synchro tilting mechanism



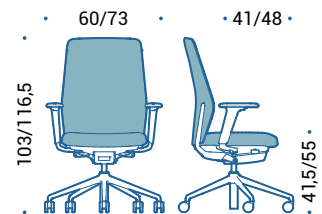
DCE.530 | swivel chair, seat height adjustable, backrest height adjustable, auto-balance synchro tilting mechanism



DCE.513 | swivel chair, seat height adjustable, backrest height adjustable, auto-balance synchro tilting mechanism, 3D adjustable armrests



DCE.523 | swivel chair, seat height adjustable, backrest height adjustable, auto-balance synchro tilting mechanism, 3D adjustable armrests



DCE.533 | swivel chair, seat height adjustable, backrest height adjustable, auto-balance synchro tilting mechanism, 3D adjustable armrests

# Colours and finishes

## Structure, base and frame

### Aluminium



47 | Polished



55 | Chromed

### Painted aluminium



111 | Black



095 | Grey

### Plastic material



111 | Black



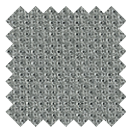
095 | Grey

## Upholstery

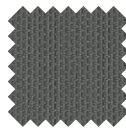
### Fabric



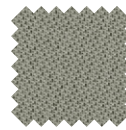
Cat. A | Bravo  
(3 colours)



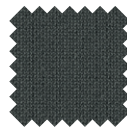
Cat. B | Atlantic  
(10 colours)



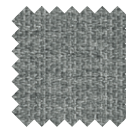
Cat. B | Mini  
(7 colours)



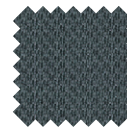
Cat. B | Tonal  
(15 colours)



Cat. C | Cura  
(14 colours)



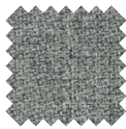
Cat. C | Mini Melange  
(9 colours)



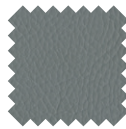
Cat. C | Sealife  
(11 colours)



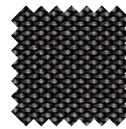
Cat. C | Step  
(8 colours)



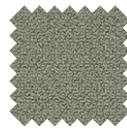
Cat. C | Step Melange  
(8 colours)



Cat. C | Sotega  
(10 colours)

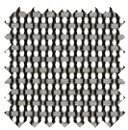


Cat. F | Breeze Fusion  
(5 colours)

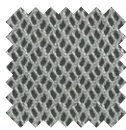


Cat. F | Grain  
(10 colours)

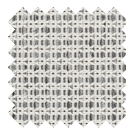
### Mesh



Cat. X | Elastic Mesh  
(7 colours)



Cat. X | Rhythm  
(9 colours)



Cat. X | Tale  
(15 colours)

### Leather

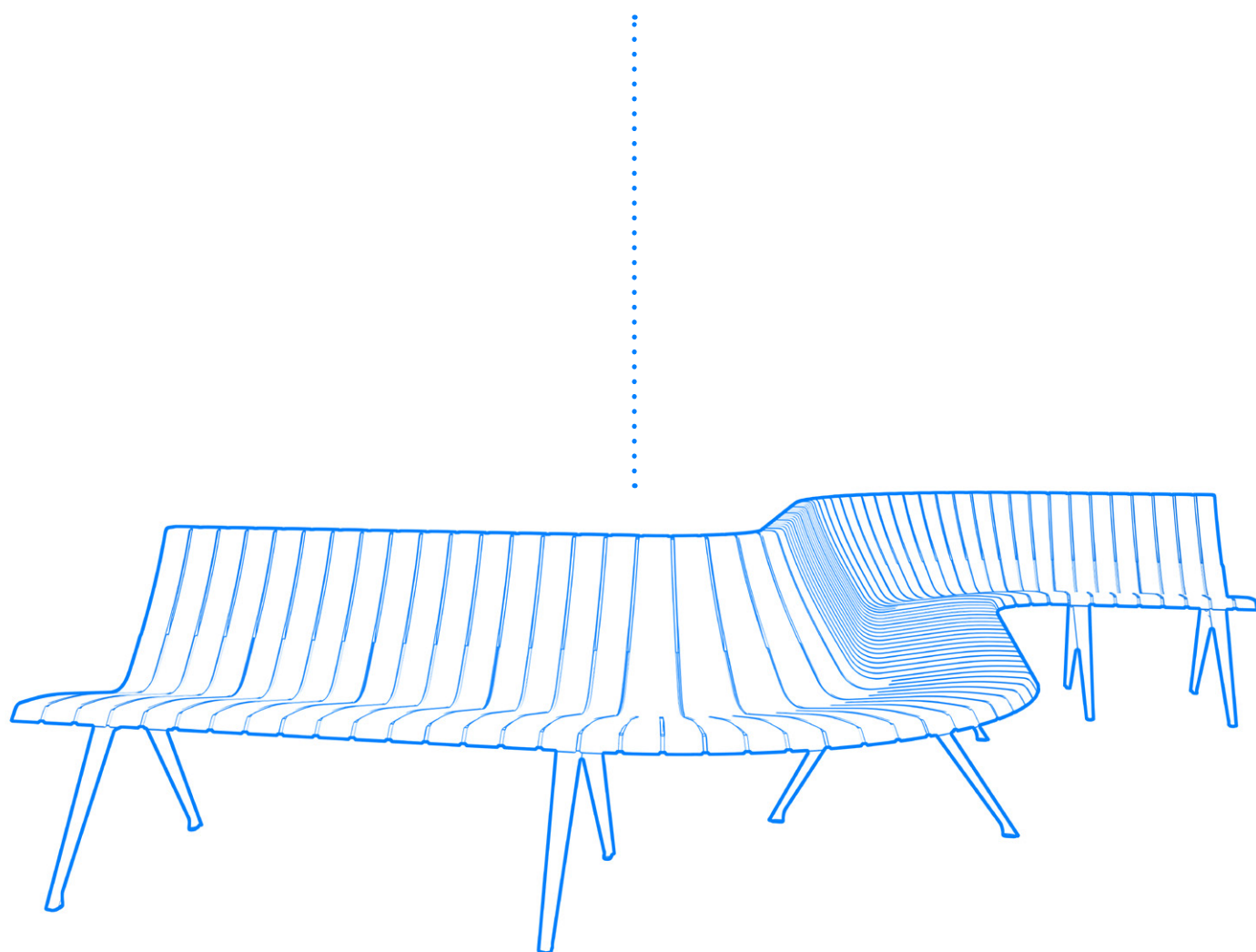


Cat. E | Leather  
(18 colours)



# GTAIu

---





# Design story



GTAlu is part of the line of seating solutions designed for a variety of waiting areas, from airports to hospitals, stations, the reception areas of private or public buildings or relaxation areas. Despite its simple aesthetics, GTAlu stands out thanks to its sinuous lines that create perfectly rounded, oval and curved shapes to refine areas that are often impersonal, lending them a distinctive stylish note.

Entirely in aluminium, GTAlu is made up of a supporting beam that is a continuation of the seat body and as a result forms the structure onto which the special elements are inserted, creating its characteristic, original sinuous rounded shapes.

GTAlu is available in varying dimensions and in different configurations thanks to the special connecting elements that generate its curved structure. It can be placed around the walls of a space to create a “moving” seat that embraces the perimeter, or in a central position to make a waiting and relaxation area that is totally independent from the rest of the space.

All the structural elements are made of tough, high quality materials, requiring minimal maintenance. But its durability is complemented by its pleasant, distinctive design, which lends itself to countless potential configurations, interpreting the space it inhabits with original flair.



# Specifications



1 **Seat and backrest in aluminium:** Die-cast aluminium shell in painted finish.

2 **Supporting beam:** Central beam in extruded aluminium in painted finish.

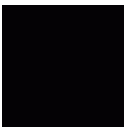
3 **Base:** Made of die-cast aluminum, with a polished or painted finish.

4 **Glides:** Floor support glides in black plastic material, with optional central element in soft rubber or felt.

# Colours and finishes

## Base

### Painted aluminium



A22 | Black



V01 | Olive green



V02 | Pale green



V03 | Agate grey



V04 | Dusty blue



100 | White

### Aluminium



47 | Polished

---

## Seat, backrest and supporting beam

### Painted aluminium



A22 | Black



V01 | Olive green



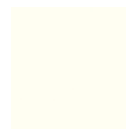
V02 | Pale green



V03 | Agate grey



V04 | Dusty blue

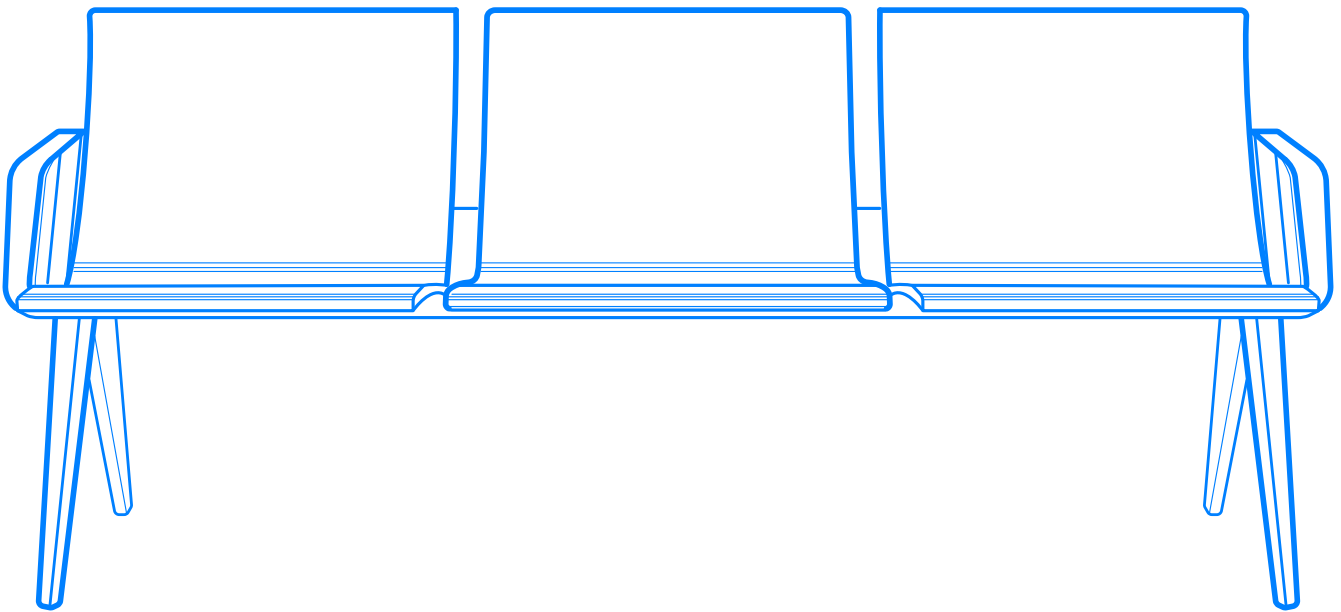


100 | White



# GTWay

---





# Design story



GTWay, designed by Norbert Geelen, is the latest series of upholstered elements designed for a variety of waiting areas, from airports to hospitals, stations, the reception areas of private or public buildings or relaxation areas.

A simple solution to a complex problem: it offers a solid, comfortable and linear seat, which is highly durable and easy to maintain, designed to seat a large number of people every day.

Just as simple as it is ingenious: the use of a single aluminium load-bearing beam, unusually positioned as a continuation of the seat body, so that it alone serves as the bearing structure to which different furnishing accessories can be added, offering comfort and elegance at the same time.

GTWay is available in variable sizes, from a minimum of 2 seats up to a maximum of 8; can be equipped with armrests, tables, electrification accessories as needed and can be made in a multitude of variants of materials.



## 4 seater saddle leather

seats upholstered in saddle leather, mid backrest with armrests every seats



## 4 seater saddle leather

seats upholstered in saddle leather, mid backrest with external armrests



## 5 seater saddle leather

seats upholstered in saddle leather, mid backrest with armrests every seats





## 4 seater veneer

seats upholstered in veneer, mid backrest with armrests every seats



## 4 seater veneer

seats upholstered in veneer, mid backrest with armrests every seats





## 4 seater PU

seats upholstered in polyurethane, mid backrest with external armrests



## 4 seater PU

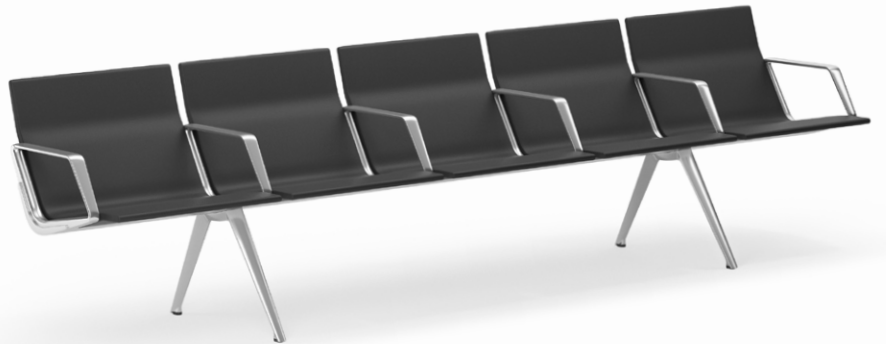
seats upholstered in polyurethane, with lateral small tables, mid backrest with armrests every seats





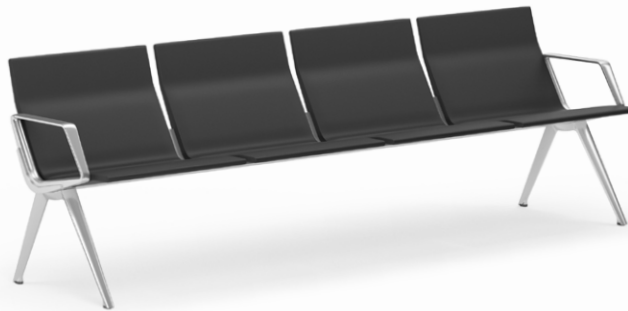
## 5 seater bench

seats upholstered in polyurethane,  
mid backrest, with armrests every  
seats



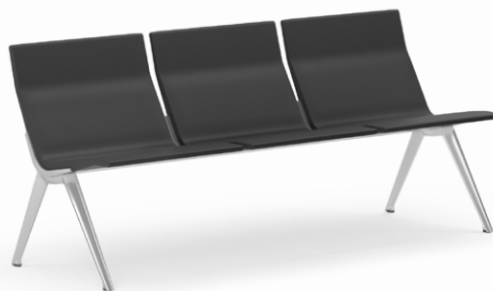
## 4 seater bench

seats upholstered in polyurethane,  
mid backrest, with external  
armrests



## 3 seater bench

seats upholstered in polyurethane,  
mid backrest, without armrests



## 2 seater bench

seats upholstered in polyurethane,  
mid backrest, with armrests every  
seats



# Specifications



- 1 **Seat and backrest in PU:** The seat shells, made of polyurethane (PU) with its slightly embossed surface, offer an excellent comfort level, a nice touch and guarantee resistance to heavy use and easy maintenance at the same time. Internal tubular steel frame is a rigid construction that maintains its shape even under significant stress. It is also available on demand in integral polyurethane foam with fire retardant characteristics.
- 2 **Seat and backrest in saddle leather:** The saddle leather sheet covers the supporting structure padded with a series of variable density polyurethane foam. The sheet thus obtained fits perfectly to distribute the weight of the body.
- 3 **Seat and backrest in veneer:** Moulded shell in oak veneered plywood with surface slabs in natural finish or black painted.

- 4 **Armrests:** Closed shape, made of die-cast aluminum with a polished or painted finish matching to the base finish. Also available with external armrests only or without armrests.
- 5 **Supporting beam:** Central beam in extruded aluminium, natural anodised or in painted finish.
- 6 **Base:** Made of die-cast aluminum, with a polished or painted finish matching to the base finish.
- 7 **Glides:** Floor support glides in black plastic material, with optional central element in soft rubber or felt.

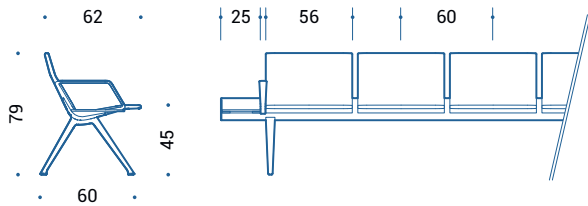
**Small table (optional):** Made of thick HPL.

**Electrification (optional):** Supporting elements for electrical wiring and data connection available on request.



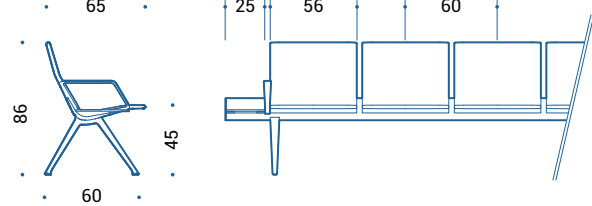
# Dimensions

## GTWay Mid backrest



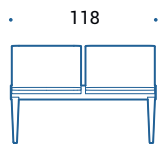
H=79cm | mid backrest

## GTWay High backrest



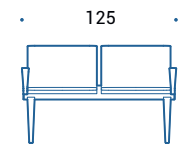
H=86cm | high backrest

### GTWay - 2 seats without armrests



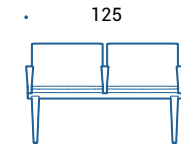
GTW.250 | mid backrest  
GTW.270 | high backrest

### GTWay - 2 seats with external armrests



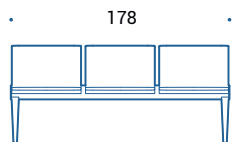
GTW.251 | mid backrest  
GTW.271 | high backrest

### GTWay - 2 seats with armrests every seats



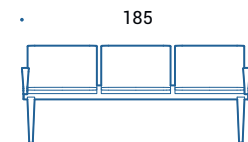
GTW.252 | mid backrest  
GTW.272 | high backrest

### GTWay - 3 seats without armrests



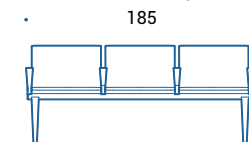
GTW.350 | mid backrest  
GTW.370 | high backrest

### GTWay - 3 seats with external armrests



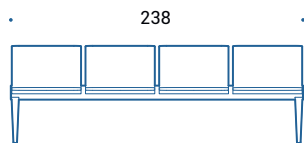
GTW.351 | mid backrest  
GTW.371 | high backrest

### GTWay - 3 seats with armrests every seats



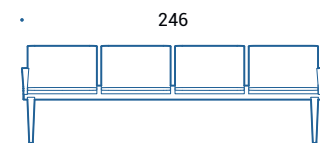
GTW.352 | mid backrest  
GTW.372 | high backrest

### GTWay - 4 seats without armrests



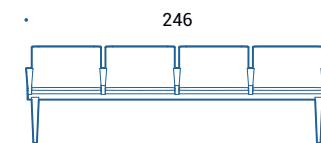
GTW.450 | mid backrest  
GTW.470 | high backrest

### GTWay - 4 seats with external armrests



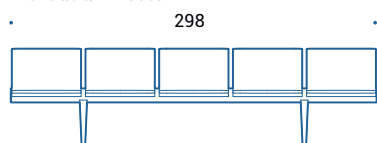
GTW.451 | mid backrest  
GTW.471 | high backrest

### GTWay - 4 seats with armrests every seats



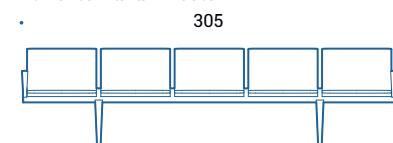
GTW.452 | mid backrest  
GTW.472 | high backrest

### GTWay - 5 seats without armrests



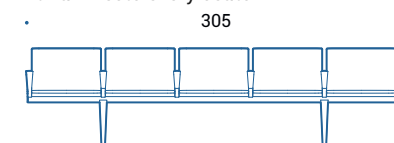
GTW.550 | mid backrest  
GTW.570 | high backrest

### GTWay - 5 seats with external armrests



GTW.551 | mid backrest  
GTW.571 | high backrest

### GTWay - 5 seats with armrests every seats



GTW.552 | mid backrest  
GTW.572 | high backrest

# Colours and finishes

## Base and armrests

### Aluminium



47 | Polished

### Painted aluminium



A22 | Black

## Beam

### Aluminium



AG01 | Natural anodised

### Painted aluminium



A22 | Black

## Upholstery

### Polyurethane



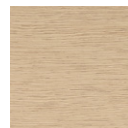
U | Polyurethane  
(1 colour)

### Saddle leather



S | Saddle leather  
(4 colours)

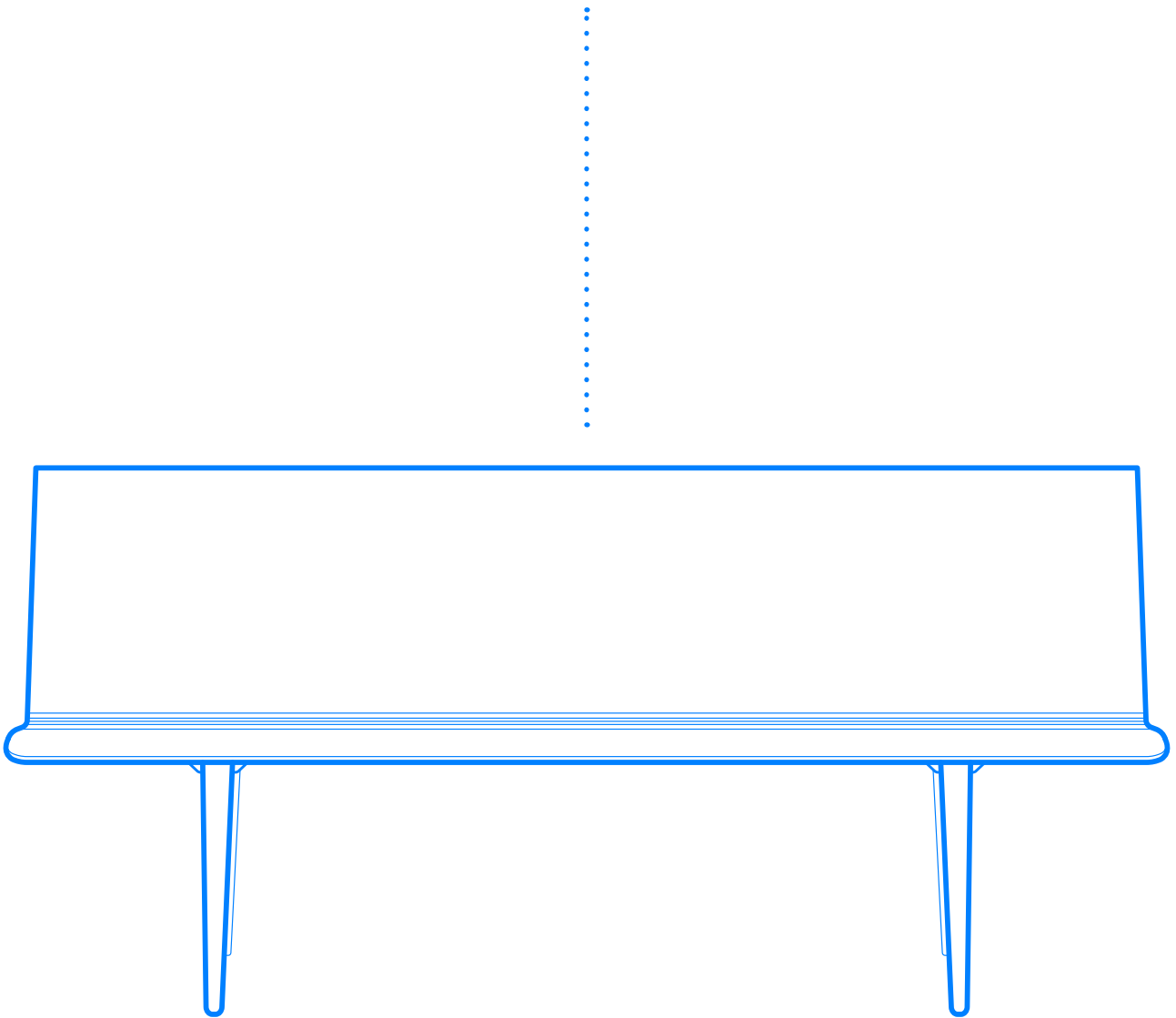
### Veneer



M | Veneer  
(2 colours)



# GTWood





# Design story



GTWood is the new bench that features unmistakable aesthetics, sleek lines and perfect practicality. Attention to detail and careful manufacturing make it perfect for isolated or intensive use, ensuring contemporary form and function in any configuration. Integration of the seat and backrest in one seamless piece gives the structure even more added value in terms of functionality and robustness.

With its lightweight linear design, the new GTWood bench stands out for its many possible different uses: in co-working spaces and meeting areas, cafeterias, restaurants or break zones, and even in any traditional waiting area, such as post offices, banks, medical centres and hospitals, airport terminals and railway stations.

GTWood combines comfort with aesthetics and, depending on the version, offers seating for up to five people without compromising on its design. All of GTWood's structural elements are made of durable, high-quality materials that require minimal maintenance.

The continuously moulded shell in multilayer wood has a minimal, almost invisible, frame and adapts to the shape of the body thanks to its ergonomics and integration of the backrest and seat in one seamless piece. Offering an excellent level of comfort, it is pleasant to the touch and at the same time guarantees resistance to heavy use.



## 2 seater veneer

seats upholstered in veneer, base in polished aluminium



## 4 seater veneer

seats upholstered in veneer, base in polished aluminium



# Specifications



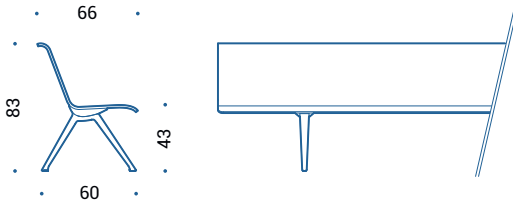
**1 Shell:** The GTWood seat shell has an ergonomic shape that comfortably supports the user's body thanks to integration of the seat and backrest in one seamless piece. The contoured edge at the front of the seat shell further enhances comfort to maintain comfortable healthy posture. The seats are modular and can be combined to form compositions of various lengths. The shell is made of continuously moulded multilayer wood veneered in oak-effect wood and is available in various colours. The shell can be supplied with cushions on the seat in fabric, the customer's fabric, leather or faux leather.

**2 Base:** The bases are in coated or polished die-cast aluminium.

**3 Feet:** The feet have an interchangeable plastic or felt insert, suitable for delicate floors (wood, ceramic, marble), available on request.

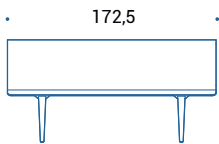
# Dimensions

## GTWood Mid backrest



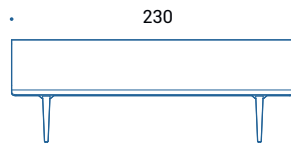
H=83cm | mid backrest

## GTWood - L=172,5 without seat cushions



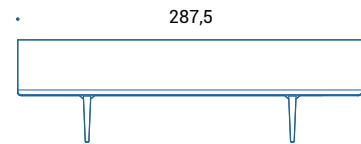
GWW.350 | mid backrest

## GTWood - L=230 without seat cushions



GWW.450 | mid backrest

## GTWood - L=287,5 without seat cushions



GWW.550 | mid backrest





# Colours and finishes

## Base

### Aluminium



47 | Polished

### Painted aluminium



A22 | Black

---

## Sheel

### Veneer

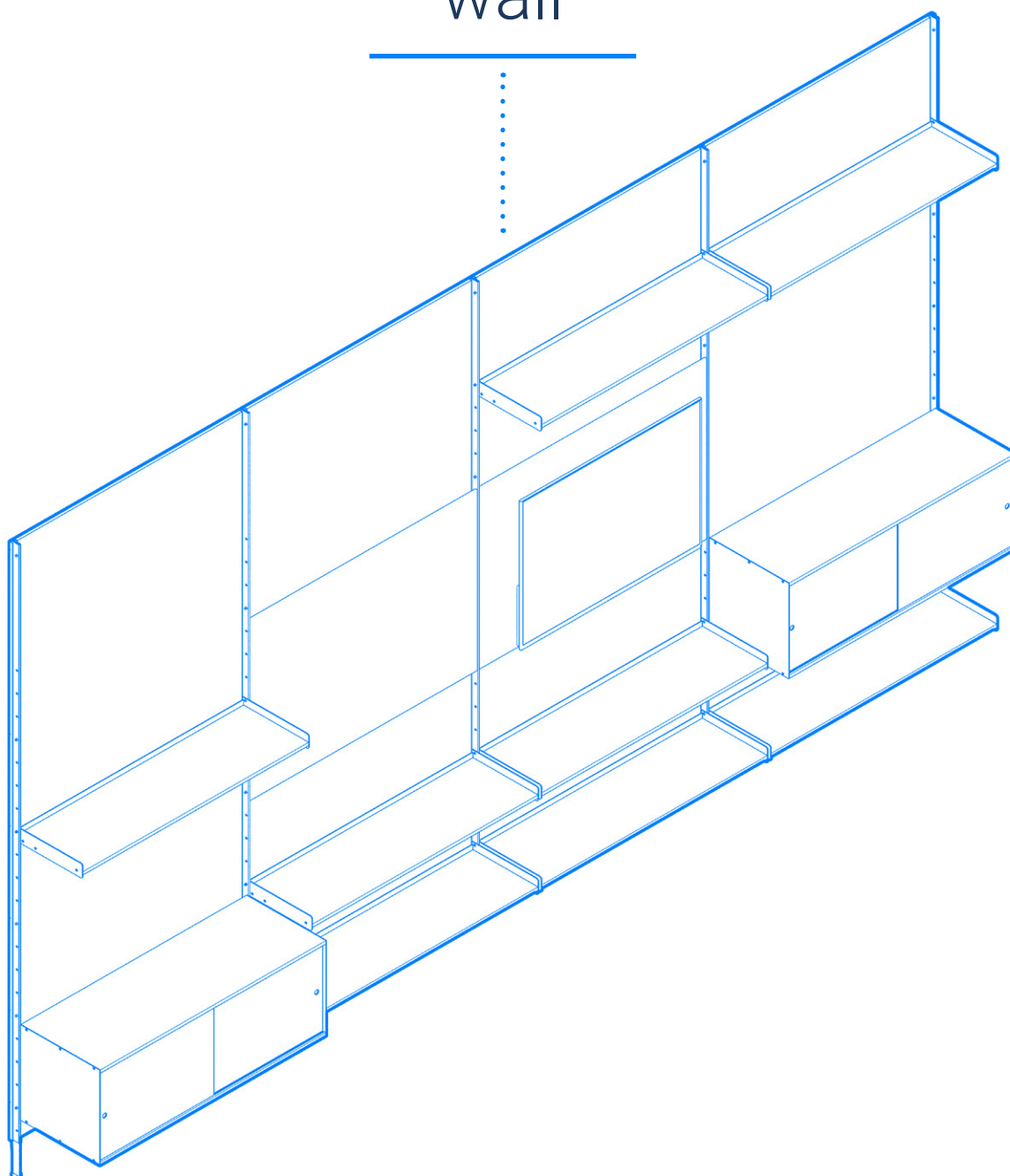


005 | Natural oak



# Qadro

wall





# Design story



Created to adapt to the needs of modern office and contract spaces, Qadro Wall is an on-trend evolution of the bookcase system and wallcoverings, and it integrates elements and finishes for specific use to support communication requirements.

A multifunction wall system featuring formal linear design; the perfect solution when creating flexible multipurpose interiors.

The structure comprises vertical uprights in anodised extruded aluminium with a rectangular cross-section, to be mounted on the wall.

The shelves and storage are also in extruded aluminium and come in variable widths from 90 to 160 cm. The collection is rounded out by specific elements for communication, such as monitor holders, whiteboards, and pin boards. The fabric acoustic panels are available in a wide range of colours.



## Qadro wall

Modular frame in aluminum profile on glides; shelves in anodised extruded aluminium, extruded aluminum storage box with Fenix sliding doors.



## Qadro wall

Modular frame in aluminum profile on glides; back panels in fabric; shelves in anodised extruded aluminium, extruded aluminum storage box with Fenix sliding doors.



# Colours and finishes

## Base

### Aluminium

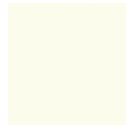


47 | Polished

### Painted aluminium



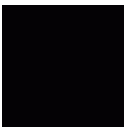
115 | Black



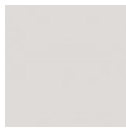
100 | White

## Structure, storage box and shelves

### Anodised aluminium

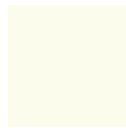


AN01 | Black



AG01 | Natural grey

### Painted aluminium



100 | White

## Panels

### Fabric



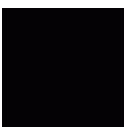
Cat. C | Hush  
(8 colours)



Cat. F | Hush Stripe 40  
(8 colours)

## Sliding doors

### Fenix



FX | Fenix  
(4 colours)

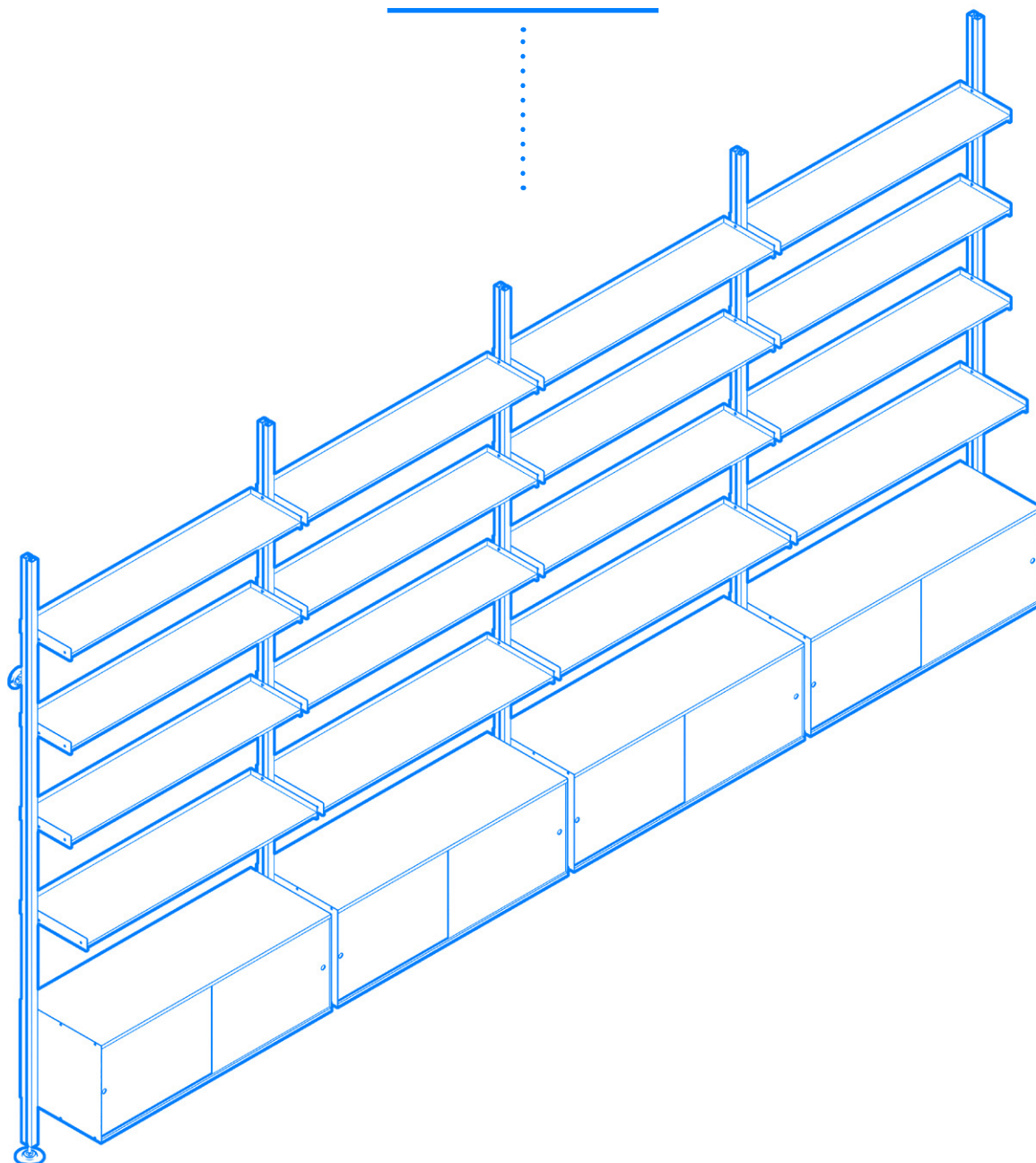




# Qadro

## system

---





# Design story



Conceived to adapt to the needs of the office and modern contract spaces, Qadro is a multifunctional wall-mounted system featuring rigorous linear design, created specifically to be easy to assemble, reconfigure and recycle: the perfect solution for flexible shelving to organise and store a multitude of objects.

Its easy assembly means it can be moved and modified to suit an infinite number of rooms and functions, from workspaces to the organisation of communal spaces. The open design units can be used for sorting books and other files, with integrated work shelves for displaying computers and screens, as well as closed cabinets for storing stationery and other office items, and it even works as a wardrobe.

The structure comprises vertical uprights in anodised extruded aluminium with a rectangular cross-section, which can be mounted on the wall or in the middle of the room (floor/ceiling). A minimum number of components are required to create a complete storage system: interlocking assembly allows for the insertion of shelves or drawer units that guarantee perfect structural stability, offering maximum freedom to customise any space with its variety of mix-and-match colours and configurations.



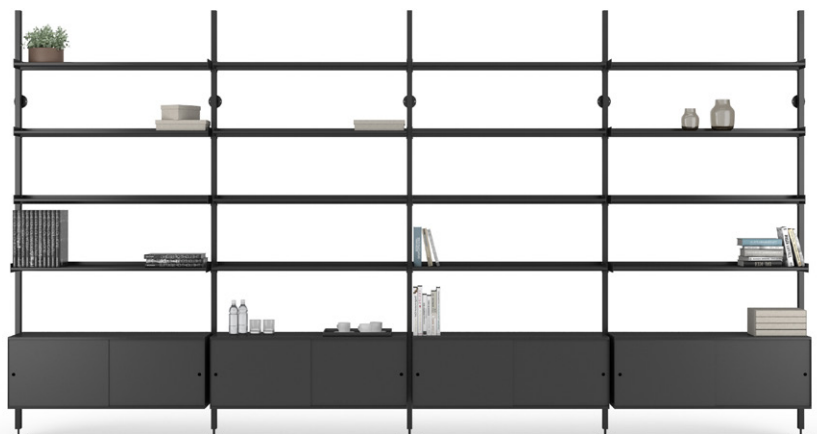
## Qadro system

Modular frame in aluminum profile on glides; shelves in anodised extruded aluminium, extruded aluminum storage box with Fenix sliding doors.



## Qadro system

Modular frame in aluminum profile on glides; shelves in anodised extruded aluminium, extruded aluminum storage box with Fenix sliding doors.



# Colours and finishes

## Base

### Aluminium



47 | Polished

### Painted aluminium



115 | Black



100 | White

## Structure, storage box and shelves

### Anodised aluminium

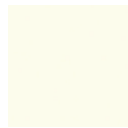


AN01 | Black



AG01 | Natural grey

### Painted aluminium



100 | White

## Panels

### Fabric



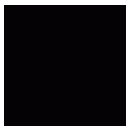
Cat. C | Hush  
(8 colours)



Cat. F | Hush Stripe 40  
(8 colours)

## Sliding doors

### Fenix



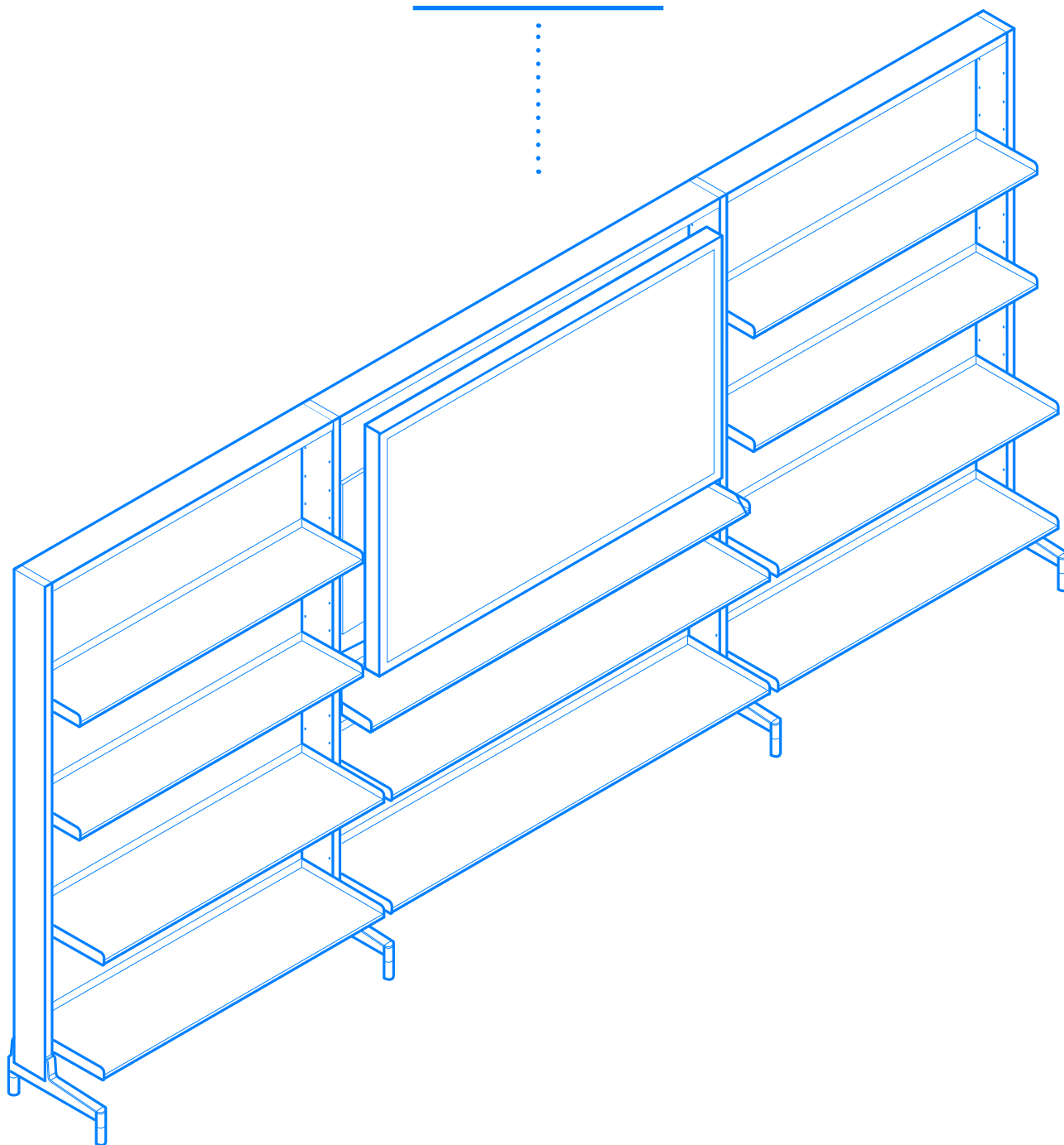
FX | Fenix  
(4 colours)



# Qadro

modular

---







# Design story



ICF presents Qadro Modular, an adjustable base element that enables users to create and re-modulate the space to suit the variety of activities it needs to be capable of hosting.

The inspiration is very simple: the frame, a basic unit which, by multiplying itself, creates a complex and multifaceted image that is continuously changing. Starting from this concept, Qadro Modular presents itself as a simple monitor-base that is evolved, developed, and diversified to characterise all the surrounding space.

By simply enlarging the base to suit the requirements, the user can create a wall system, or a vase-holder partition that conveys a "green" effect, or incorporate a desk to obtain a space for tasks requiring concentration. Alternatively, install lockers or storage boxes to obtain a multifunction wall... to combine different elements to define an entire professional space that does not remain static, but can be continuously modified to cater for ever changing requirements. It's easy: all the elements can be assembled on wheels and have minimum dimensions of some relief - starting from 1 m 20 centimeters - so they can be used to create a variety of furnishing solutions, even when used on their own.



## Qadro modular media wall

Modular frame in aluminum profile, asymmetrical base in die-cast aluminium on glides; monitor holder unit in painted tubular, shelves in anodised extruded aluminium, extruded aluminum storage box with Fenix sliding doors.



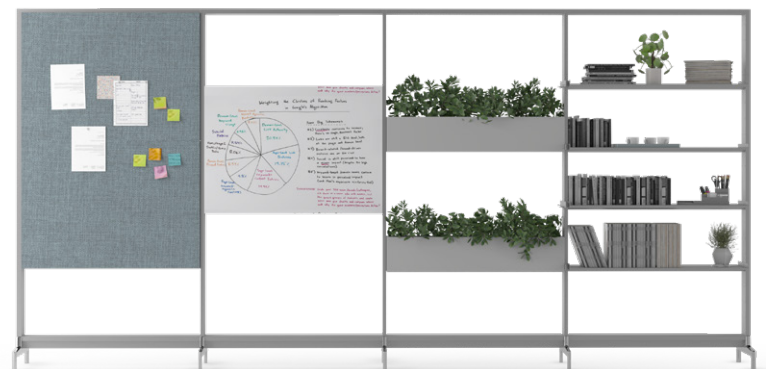
## Qadro modular wall library

Modular frame in aluminum profile, asymmetrical base in die-cast aluminium on glides; shelves in anodised extruded aluminium, extruded aluminum storage box with Fenix sliding doors.

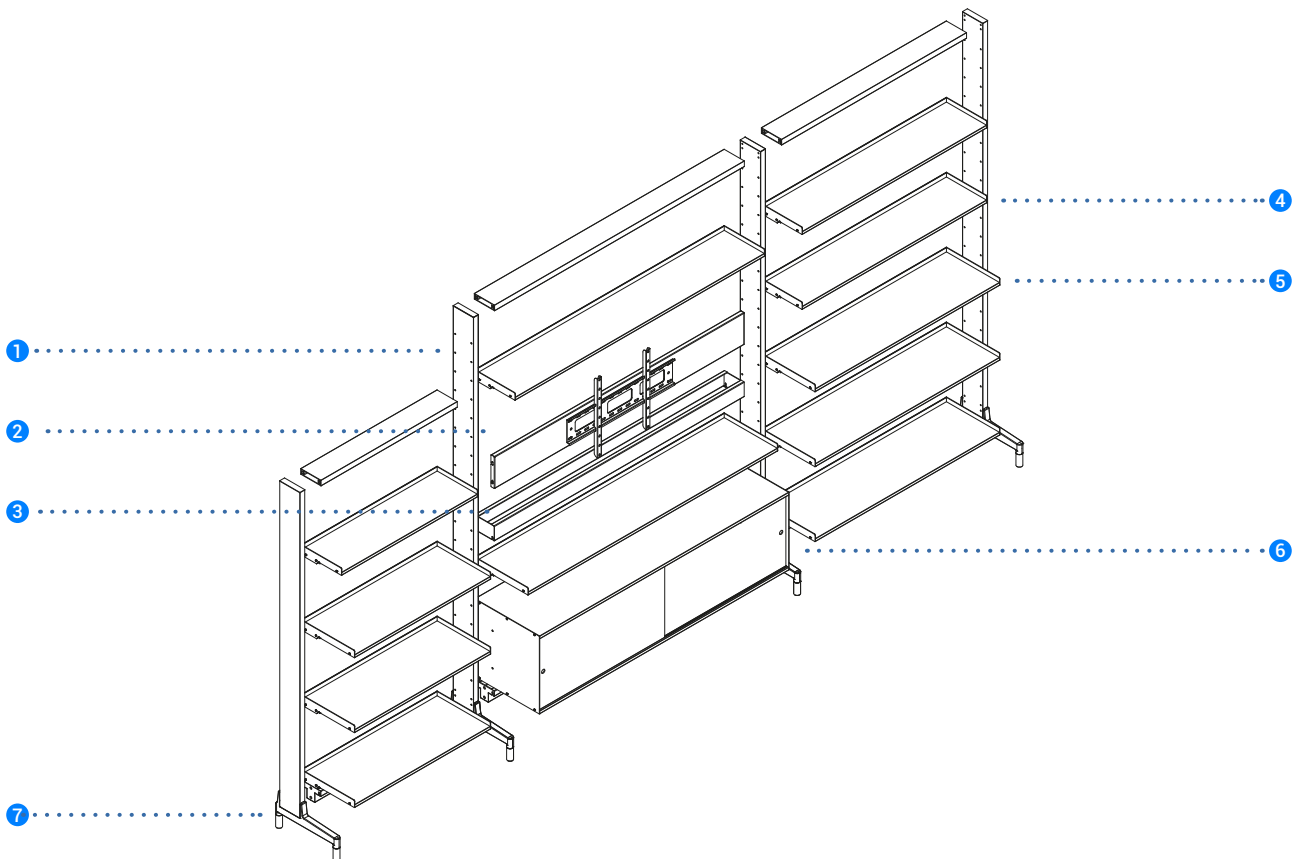


## Qadro modular open plan divider

Modular frame in aluminum profile, base in die-cast aluminium on glides; shelves in anodised extruded aluminium, sheet metal plant boxes; panels upholstered in fabric; whiteboard.



# Specifications



1 **Frame:** Modular frame in aluminum profile.

2 **Monitor holder unit:** Monitor holder unit in painted tubular suitable for screens from 50" to 75". Screens may extend outside the perimeter of the frame.

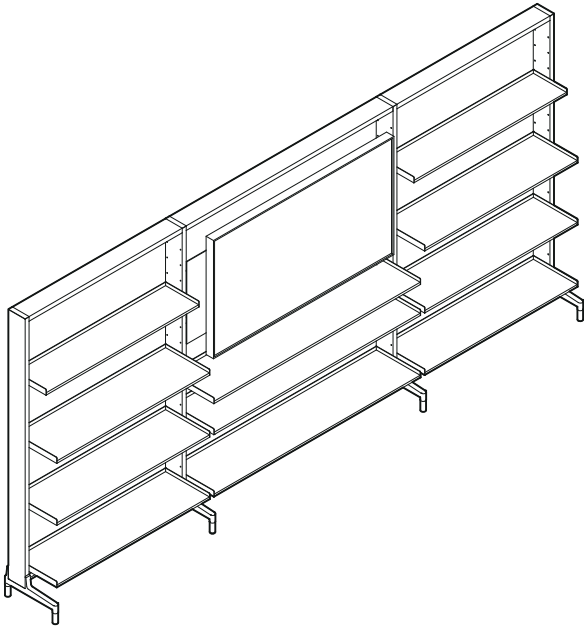
3 **Cable tray:** Painted sheet metal cable tray.

4 **Shelves:** Asymmetrical extruded aluminum shelves, anodized finish, depth 25 cm

5 **Shelves:** Asymmetrical extruded aluminum shelves, anodized finish, depth 33 cm

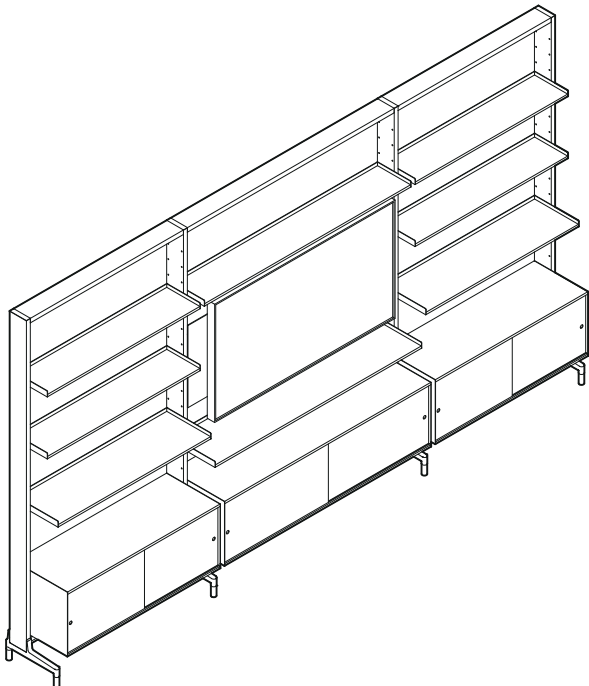
6 **Storage box:** Extruded aluminum storage box with Fenix sliding doors

7 **Base:** Asymmetrical base in die-cast aluminium, polished or painted, on floor glides adjustable in height +/- 1,5 cm.



## QMWB

media wall on glides with central monitor holder unit suitable for screens from 50" to 75", modular frame in aluminium profile, anodised finish, asymmetrical base in die-cast aluminium, polished or painted, asymmetrical extruded aluminium shelves, anodised finish

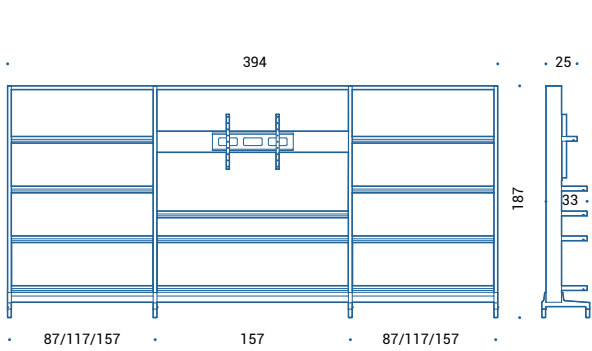


## QMWD

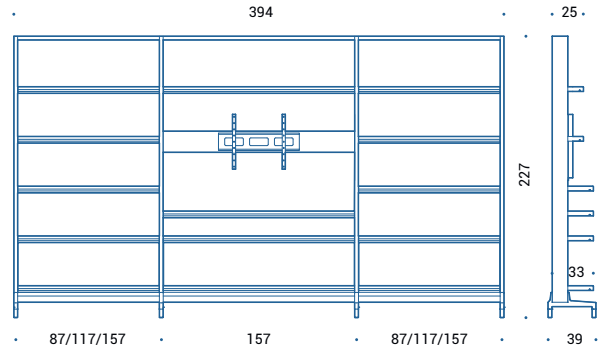
media wall on glides with central monitor holder unit suitable for screens from 50" to 75", modular frame in aluminium profile, anodised finish, asymmetrical base in die-cast aluminium, polished or painted, asymmetrical extruded aluminium shelves, anodised finish; extruded aluminium storage box with Fenix sliding doors



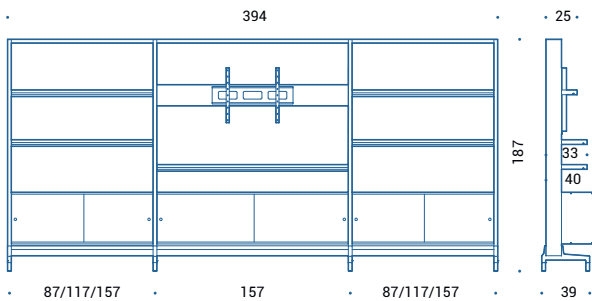
# Dimensions



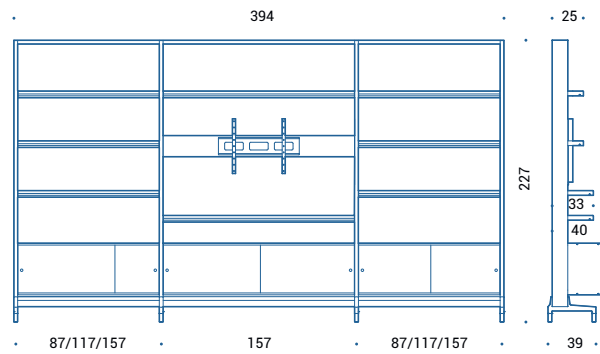
QMWB.435/445/455 | media wall



QMWB.436/446/456 | media wall



QMWD.435/445/455 | media wall



QMWD.436/446/456 | media wall

# Colours and finishes

## Base

### Aluminium



47 | Polished

### Painted aluminium



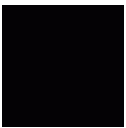
115 | Black



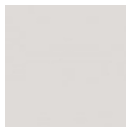
100 | White

## Structure, storage box and shelves

### Anodised aluminium

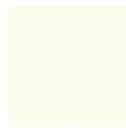


AN01 | Black



AG01 | Natural grey

### Painted aluminium



100 | White

## Panels

### Fabric



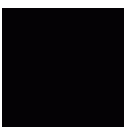
Cat. C | Hush  
(8 colours)



Cat. F | Hush Stripe 40  
(8 colours)

## Sliding doors

### Fenix



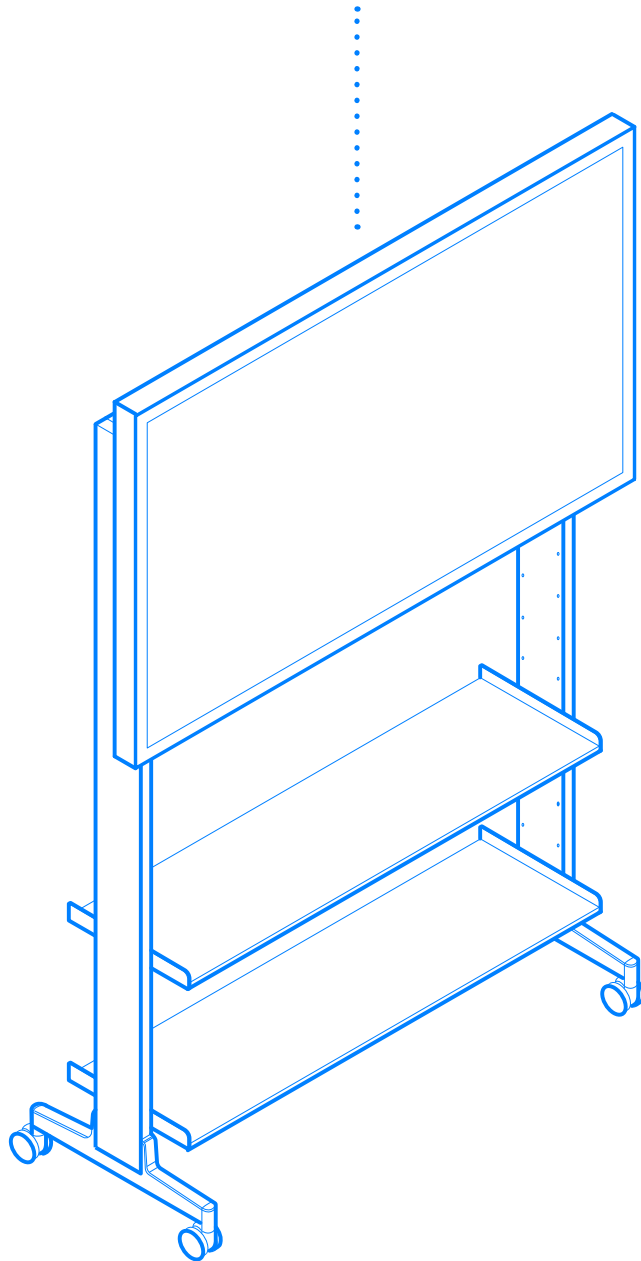
FX | Fenix  
(4 colours)



# Qadro

freestanding | media stand

---







# Design story



ICF presents Qadro Freestanding, a brand new idea for meeting the challenges posed by the new way of working and creating a new perspective inspired by a completely unusual focus: the monitor and its surroundings, the new linchpin of the office environment, because it is precisely around it that the new working rhythms flow: meetings, international calls, brainstorming sessions, educational initiatives, staff training, operational meetings, time-outs... And this is where Qadro comes in, an adjustable base element that enables users to create and re-modulate the space to suit the variety of activities it needs to be capable of hosting.

The inspiration is very simple: the frame, a basic unit which, by multiplying itself, creates a complex and multi-faceted image that is continuously changing. Starting from this concept, Qadro Freestanding presents itself as a simple monitor-base that is evolved, developed, and diversified to characterise all the surrounding space.



## Qadro monitor stand with storage box

Modular frame in anodized extruded aluminum, die-cast aluminium base on castors, monitor holder unit in painted tubular, side monitor bands, storage box in extruded aluminium with sliding doors in Fenix

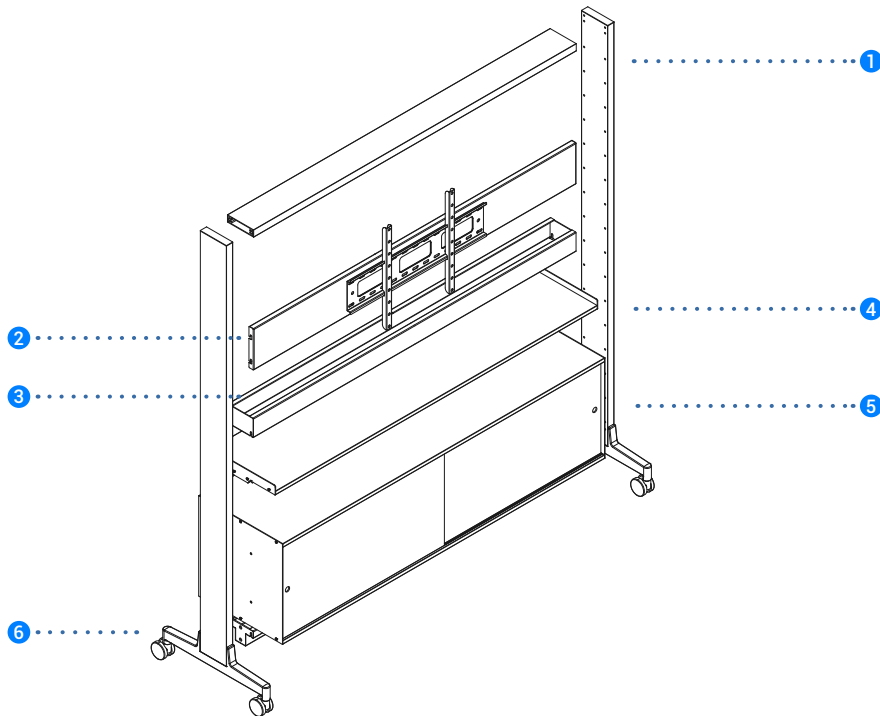


## Qadro monitor stand with panels

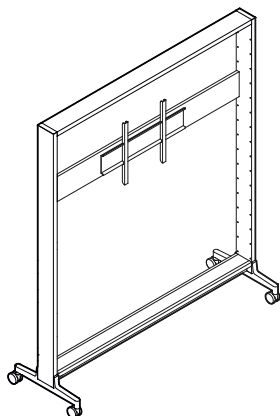
Modular frame in anodized extruded aluminum, die-cast aluminium base on castors, monitor holder unit in painted tubular, optional sheet metal cable tray, panels in sound absorbing fabric



# Specifications



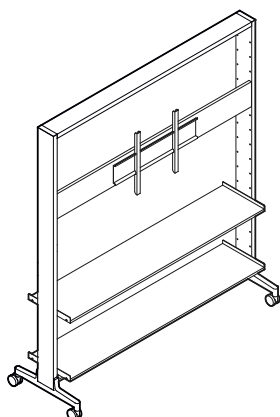
- 1 **Frame:** Modular frame in aluminum profile.
- 2 **Monitor holder unit:** Monitor holder unit in painted tubular suitable for screens from 50" to 75". Screens may extend outside the perimeter of the frame.
- 3 **Cable tray:** Painted sheet metal cable tray.
- 4 **Shelves:** Extruded aluminum shelves, anodized finish.
- 5 **Storage box:** Extruded aluminum storage box with Fenix sliding doors
- 6 **Base:** Base in die-cast aluminium, polished or painted, on castors, no. 2 with lock.



## QMSA

monitor holder unit on castors, suitable for screens from 50" to 75", anodised or painted modular frame in aluminum profile, base in die-cast aluminium, polished or painted.

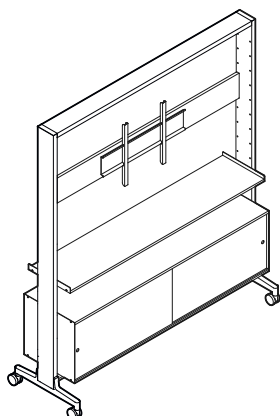
---



## QMSB

monitor holder unit on castors, suitable for screens from 50" to 75", anodised or painted modular frame in aluminum profile, base in die-cast aluminium, polished or painted, two shelves in anodised or painted extruded aluminium.

---

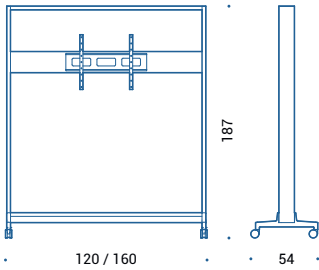


## QMSD

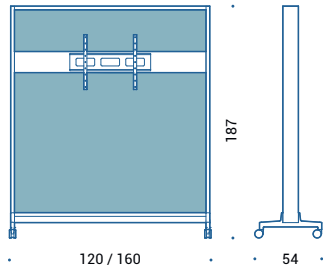
monitor holder unit on castors, suitable for screens from 50" to 75", anodised modular frame in aluminum profile, base in die-cast aluminium, polished or painted, one shelf in anodised or painted extruded aluminium, storage box in extruded aluminium with sliding doors in Fenix.



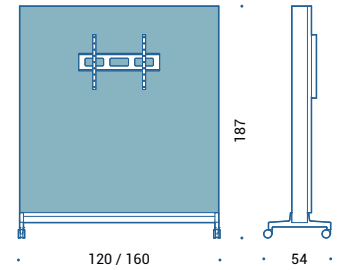
# Dimensions



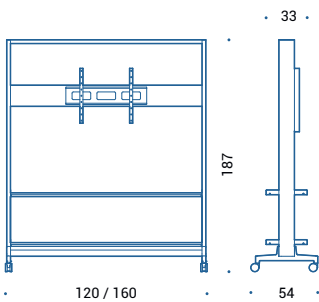
QMSA.125/165 | monitor stand



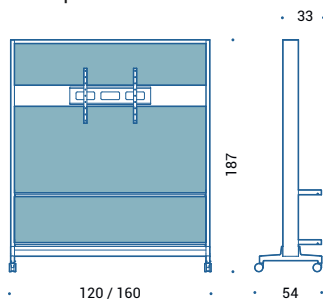
QMSA.125/165 | monitor stand with back panel



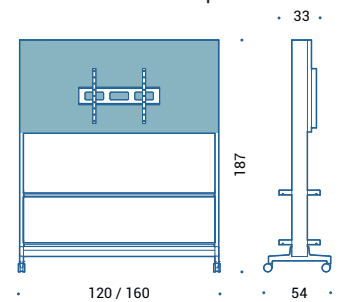
QMSA.125/165 | monitor stand with front and back panels



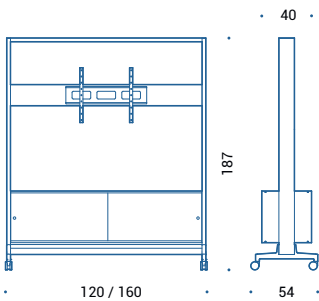
QMSB.125/165 | monitor stand



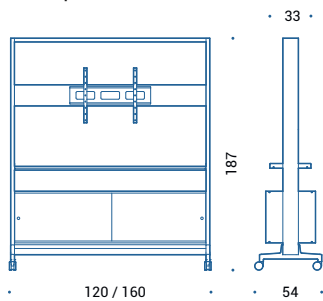
QMSB.325/365 | monitor stand with back panel



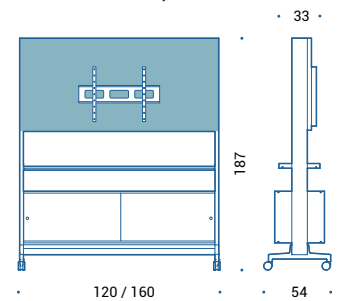
QMSB.125/165 | monitor stand with front and back panels



QMSC.125/165 | monitor stand



QMSD.125/165 | monitor stand



QMSD.125/165 | monitor stand with front and back panels

# Colours and e finishes

## Base

### Aluminium

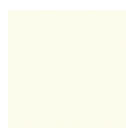


47 | Polished

### Painted aluminium



115 | Black



100 | White

## Structure, storage box and shelves

### Anodised aluminium

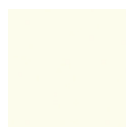


AN01 | Black



AG01 | Natural grey

### Painted aluminium



100 | White

## Panels

### Fabric



Cat. C | Hush  
(8 colours)



Cat. F | Hush Stripe 40  
(8 colours)

## Sliding doors

### Fenix



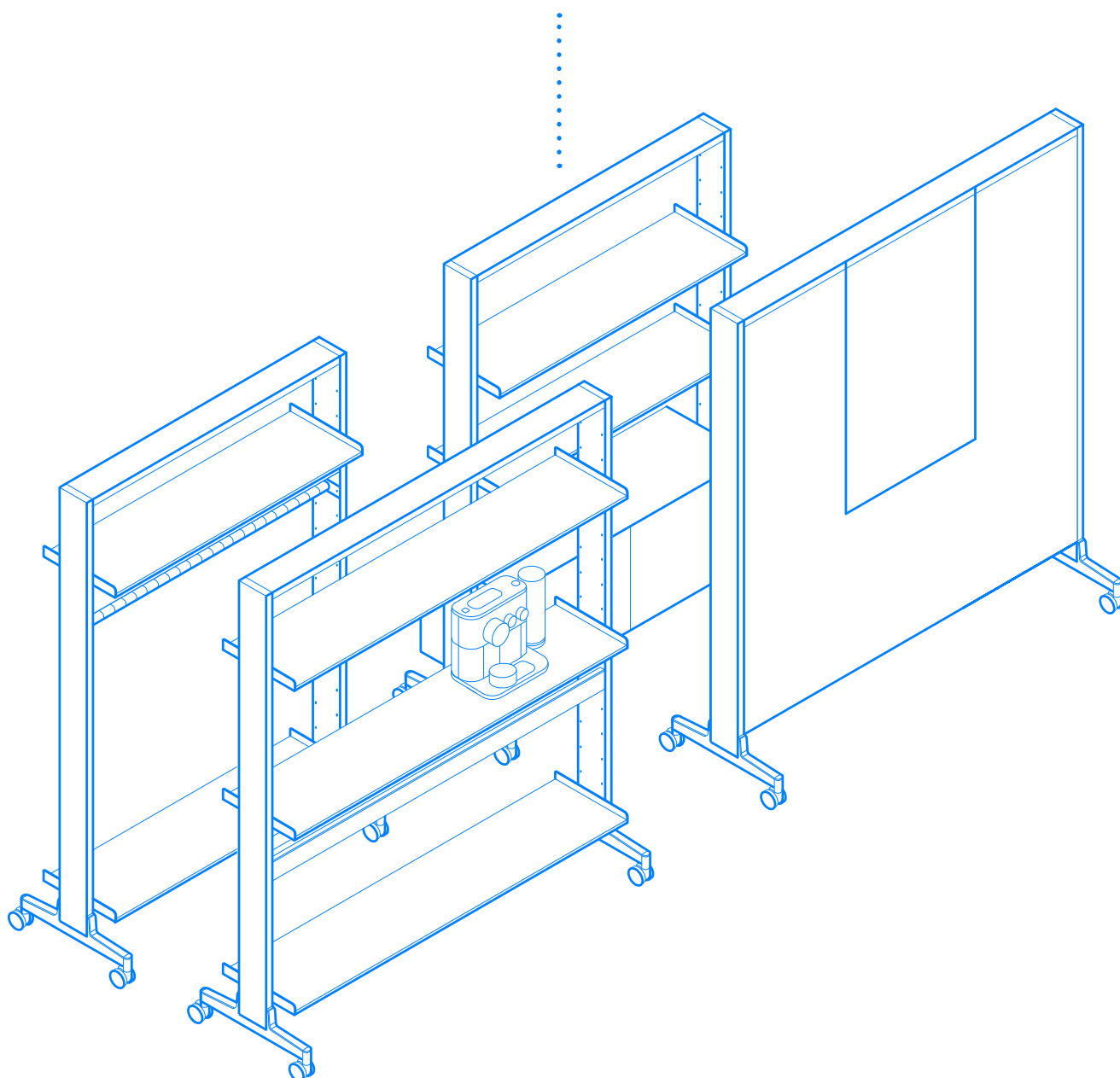
FX | Fenix  
(4 colours)



# Qadro

freestanding | cart

---







# Design story



ICF presents Qadro, an adjustable base element that enables users to create and re-modulate the space to suit the variety of activities it needs to be capable of hosting.

The inspiration is very simple: the frame, a basic unit which, by multiplying itself, creates a complex and multifaceted image that is continuously changing. Starting from this concept, Quadro Freestanding presents itself as a simple monitor-base that is evolved, developed, and diversified to characterise all the surrounding space.

By simply enlarging the base to suit the requirements, the user can create a wall system, or a vase-holder partition that conveys a "green" effect, or incorporate a desk to obtain a space for tasks requiring concentration. Alternatively, install lockers or storage boxes to obtain a multifunction wall... to combine different elements to define an entire professional space that does not remain static, but can be continuously modified to cater for ever changing requirements. It's easy: all the elements can be assembled on wheels and have minimum dimensions of some relief - starting from 1 m 20 centimeters - so they can be used to create a variety of furnishing solutions, even when used on their own.



## Qadro bookcase

Modular frame in aluminum profile, base in die-cast aluminium on castors; shelves in anodised extruded aluminium, storage box in extruded aluminium with sliding doors in Fenix



## Qadro coffee station

Modular frame in aluminum profile, base in die-cast aluminium on castors; shelves in anodised extruded aluminium, cable tray, panels in sound absorbing fabric





## Qadro pinboard

Modular frame in aluminum profile, base in die-cast aluminium on castors; panels in sound absorbing fabric

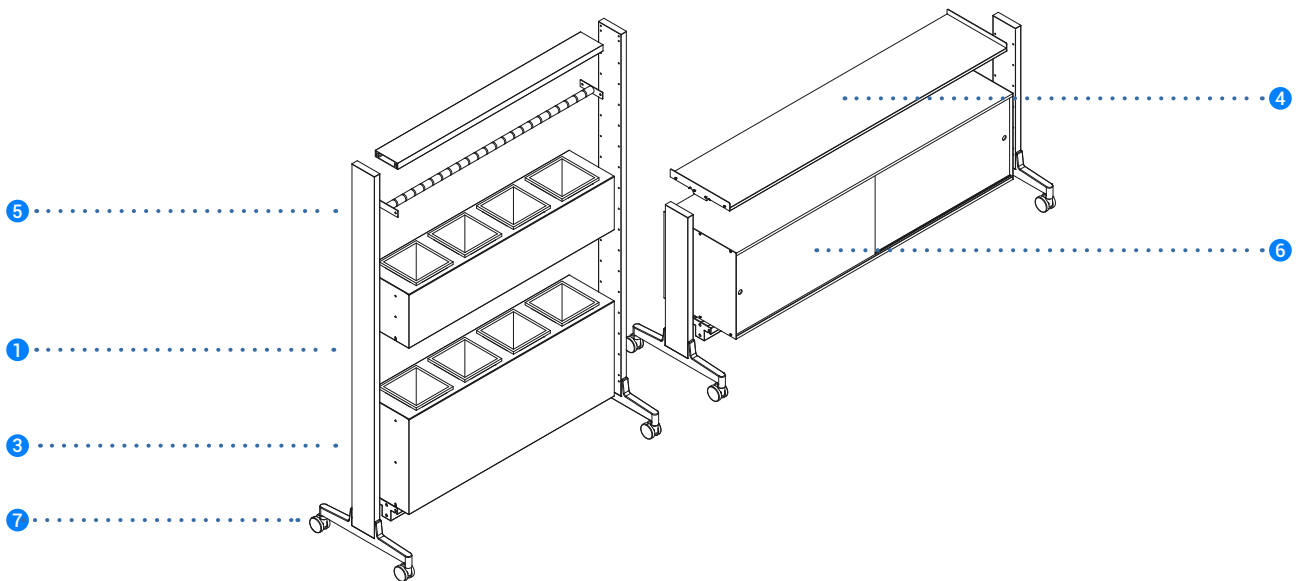


## Qadro coat hanger

Modular frame in aluminum profile, base in die-cast aluminium on castors; shelves in anodised extruded aluminium, coat hanger unit in tubular metal



# Specifications



1 **Frame:** Modular frame in aluminum profile.

2 **Cable tray:** Painted sheet metal cable tray.

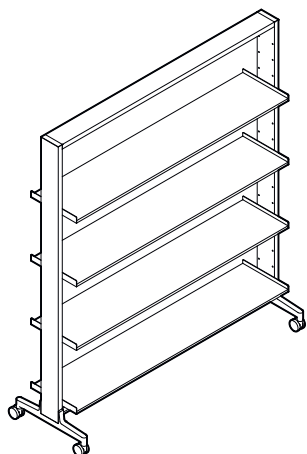
3 **Plant boxes:** sheet metal plant boxes compatible with Lechuza system (not supplied). Box h. 26 cm.  
Module l.120 cm: the box provides for the use of no.4 pots.  
Module l.160 cm: the box provides for the use of no.5 pots

4 **Shelves:** Extruded aluminum shelves, anodized finish.

5 **Coat hanger unit:** Coat hanger in tubular metal or aluminum (optional)

6 **Storage box:** Extruded aluminum storage box with Fenix sliding doors

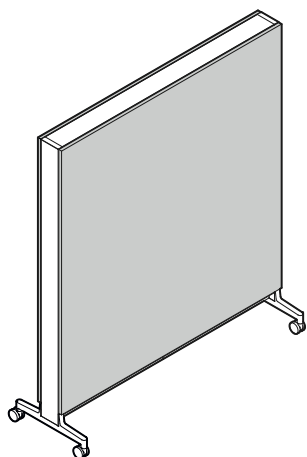
7 **Base:** Base in die-cast aluminium, polished or painted, on castors, no. 2 with lock.



## QSH

space divider on castor, anodised or painted modular frame in aluminum profile, base in die-cast aluminium, polished or painted, four shelves in anodised or painted extruded aluminium.

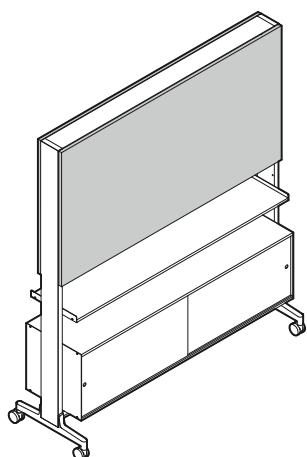
---



## QS

space divider on castor, anodised or painted modular frame in aluminum profile, base in die-cast aluminium, polished or painted, panels upholstered in fabric or whiteboard.

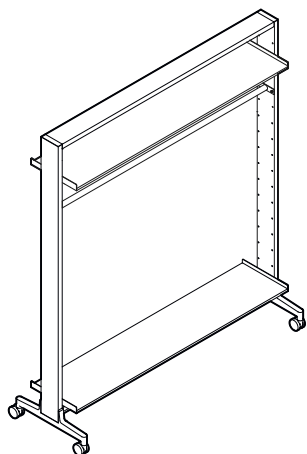
---



## QSD

space divider on castor, anodised or painted modular frame in aluminum profile, base in die-cast aluminium, polished or painted, one shelf in anodised or painted extruded aluminium, storage box in extruded aluminium with sliding doors in Fenix, panels upholstered in fabric or whiteboard.

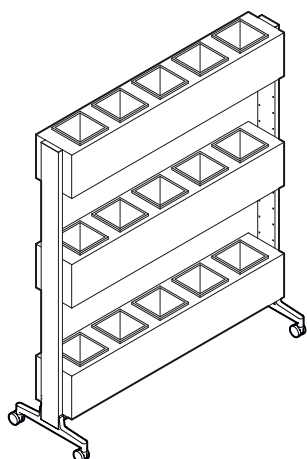




## QCHA

coat hanger on castor, anodised or painted modular frame in aluminum profile, base in die-cast aluminium, polished or painted, coat hanger unit in tubular metal

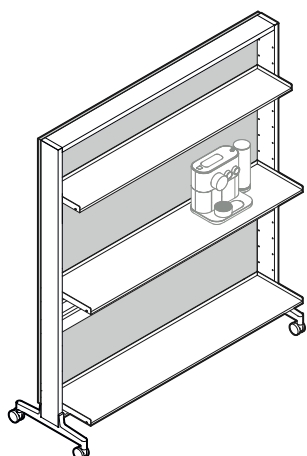
---



## QPL

planter on castor, anodised or painted modular frame in aluminum profile, base in die-cast aluminium, polished or painted, sheet metal plant boxes compatible with Lechuza system (not supplied) - n.3 boxes H.27

---

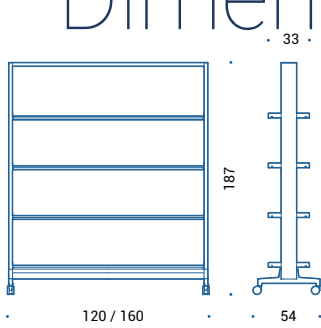


## QCB

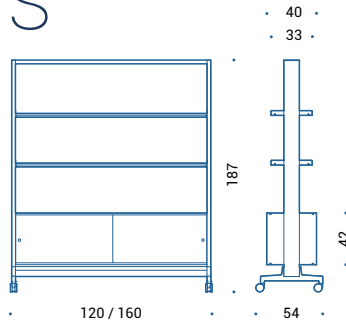
planter on castor, anodised or painted modular frame in aluminum profile, base in die-cast aluminium, polished or painted, three shelves in anodised or painted extruded aluminium, sheet metal cable tray.



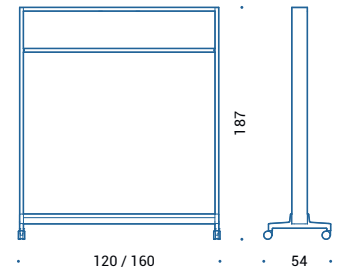
# Dimensions



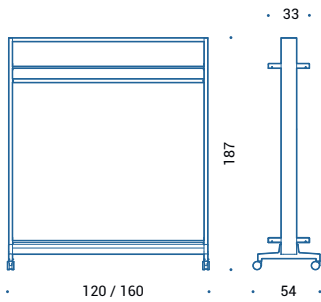
QSH.125/165 | space divider



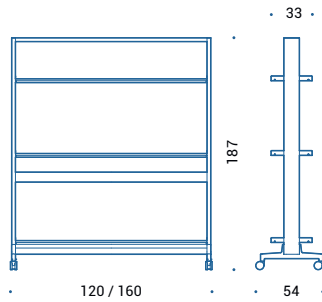
QSE.125/165 | space divider



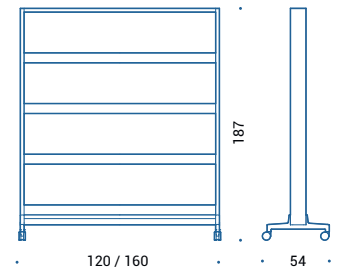
QCH.125/165 | coat hanger



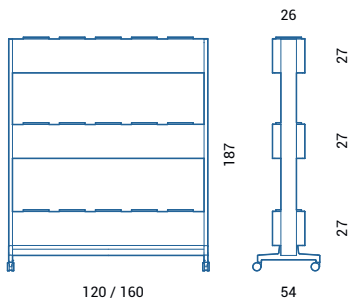
QCHA.125/165 | coat hanger



QCB.125/165 | coffee unit



QPLB.125/165 | planters



QPL.125/165 | planters



## Base

### Aluminium

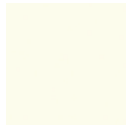


47 | Polished

### Painted aluminium



115 | Black

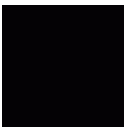


100 | White

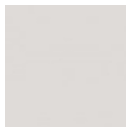
---

## Structure, storage box and shelves

### Anodised aluminium

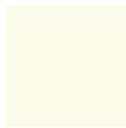


AN01 | Black



AG01 | Natural grey

### Painted aluminium



100 | White

---

## Panels

### Fabric



Cat. C | Hush  
(8 colours)

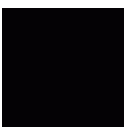


Cat. F | Hush Stripe 40  
(8 colours)

---

## Sliding doors

### Fenix

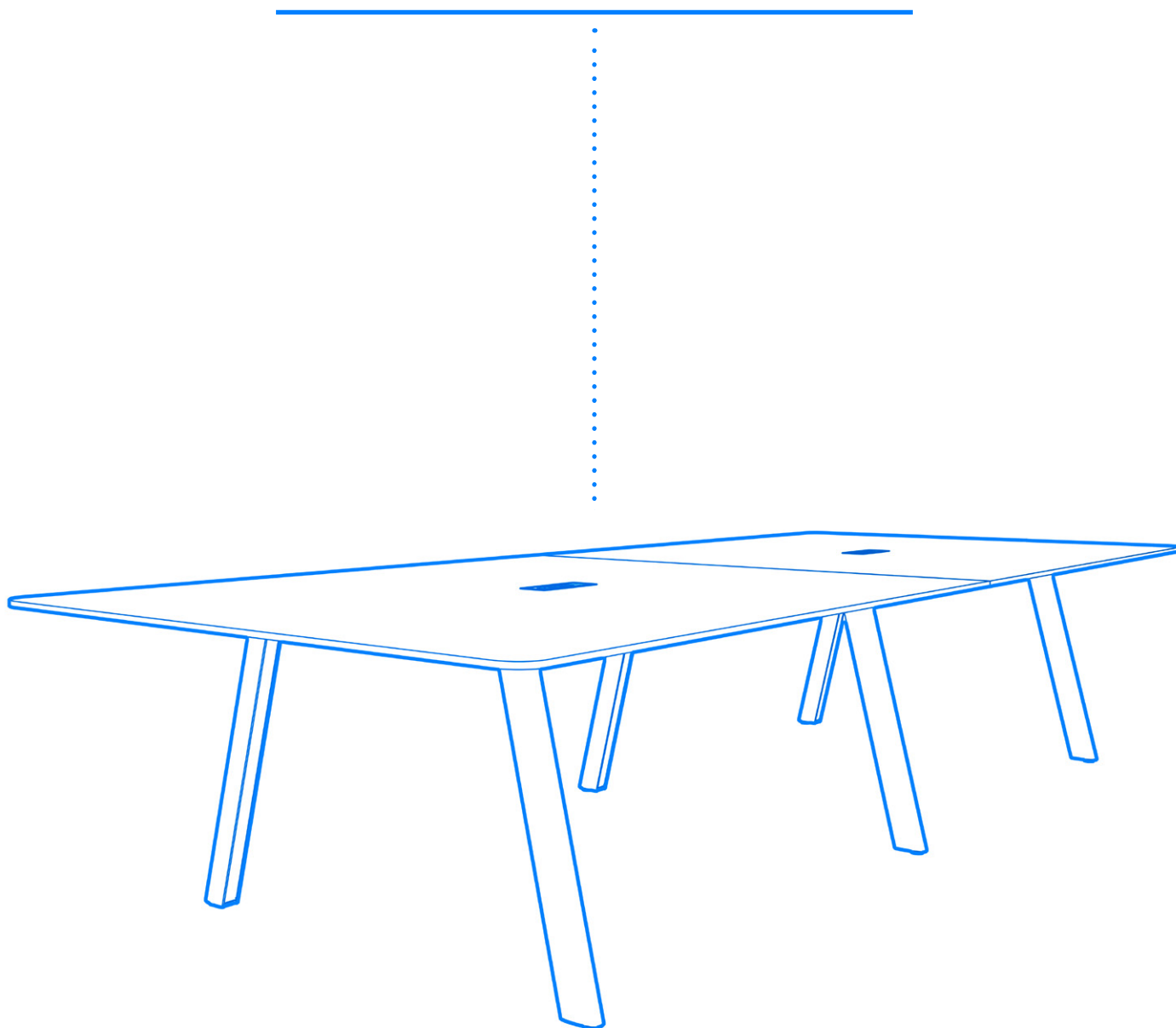


FX | Fenix  
(4 colours)





# PFlex





# Design story



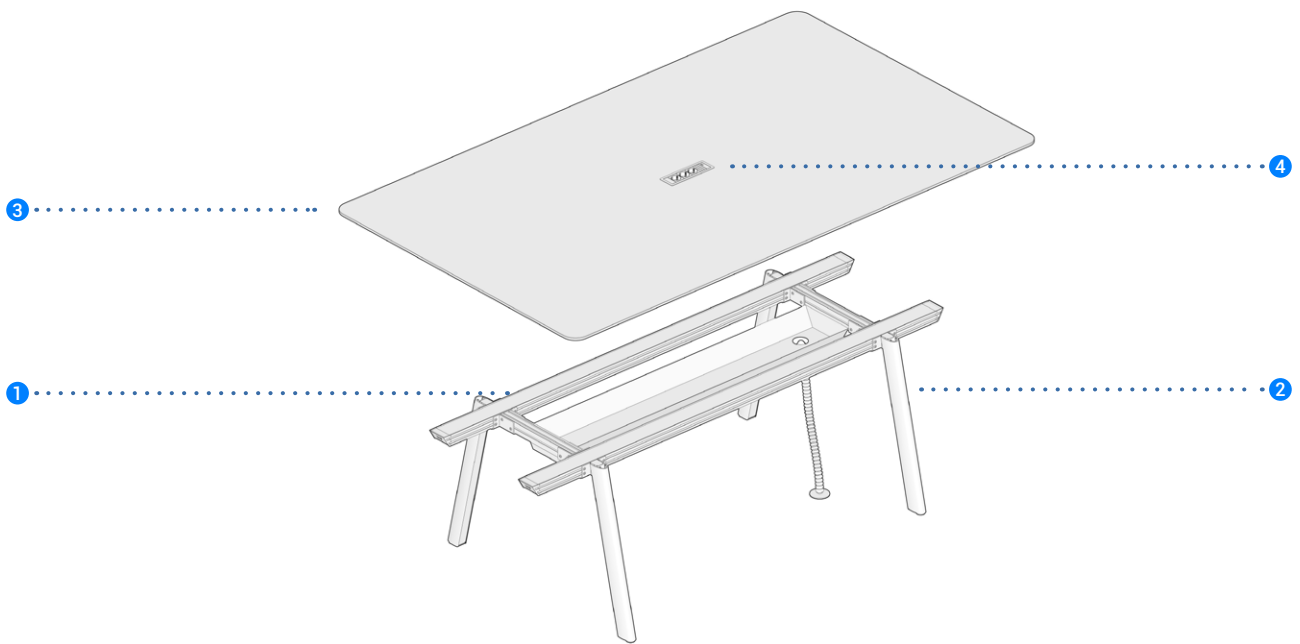
Today's increasingly flexible offices, free from traditional organisation, require products that offer multiple configurations: PFlex is a new table system for modern work, meeting and communication areas. Whether it is a single, executive or meeting table, PFlex adapts to every need thanks to its compositional flexibility and, thanks to its clean, linear design, it succeeds in adding character to any room while maintaining balance and harmony of form.

The system's modular structural components make it easy to create tables for any configuration. Different depths, widths and finishes can be adapted to the size and style of room, to a varying number of people, and to different types of conference thanks to customised, state-of-the-art design solutions.

The drawn aluminium legs are available in two shapes, oval and rectangular, which make the structure particularly striking thanks to an interplay of lines and light.

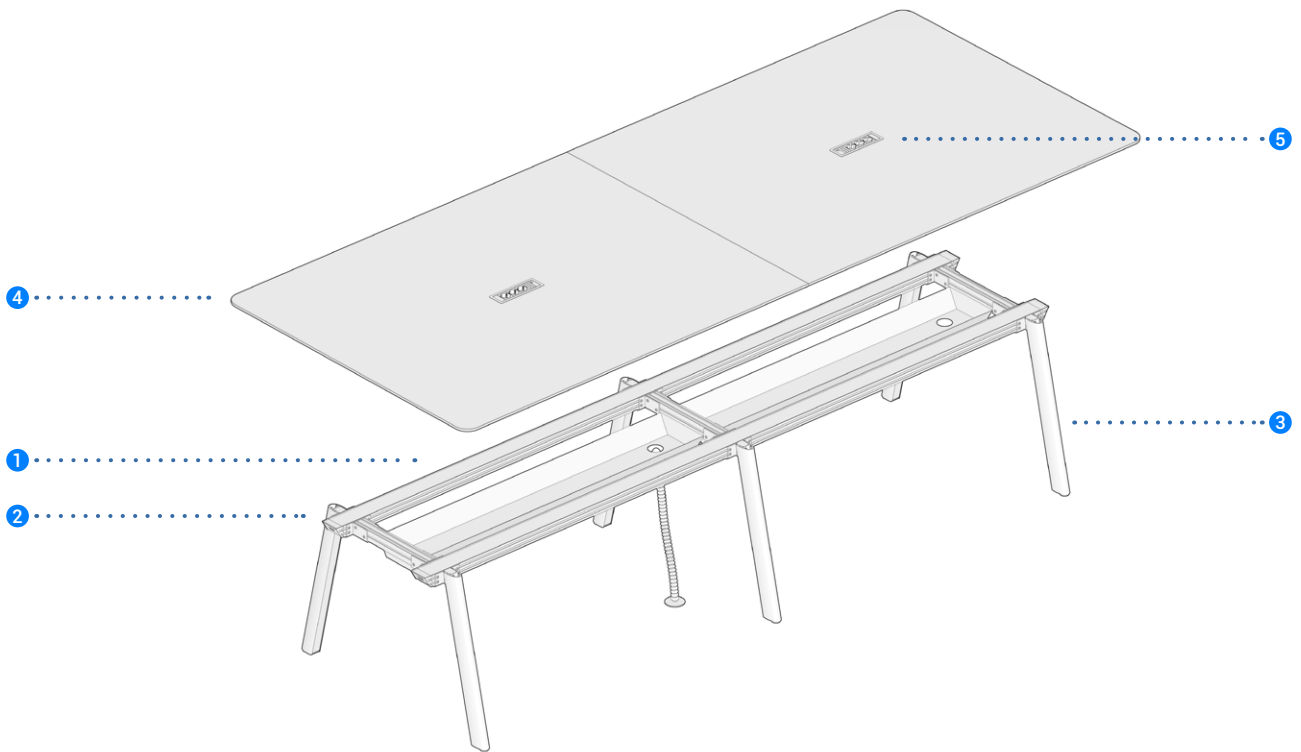
A wide range of accessories and electrification complements also meet the demand for specialised functions, making PFlex the ideal solution for a diversity of uses.

# Specifications



- 1 **Structural profile:** extruded painted aluminium under-top surface, inner side with continuous groove for optional cable routing. Black plastic tailpieces.
- 2 **Legs:** anodised aluminium, painted aluminium, and oak-covered aluminium. Can be adjusted in height using the adjustment leg. The table legs are attached to a connector and together form the base. The number of legs will depend on the size of the table.

- 3 **Top:** Top structure in plywood chipboard with top layer in: Fenix/HPL/veneer.
- 4 **Electrical set-up:** The flip door is formed by an aluminium frame and a central element in the same finish as the top. It has an opening on both sides and a painted metal cable tray under the top to hold wiring. Optional vertical duct. Electrical outlets are not provided.

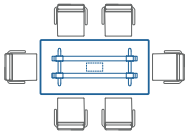


- 1 **Structural profile:** extruded painted aluminium under-top surface, inner side with continuous groove for optional cable routing. Black plastic tailpieces.
- 2 **Legs:** anodised aluminium, painted aluminium, and oak-covered aluminium. Can be adjusted in height using the adjustment leg. The table legs are attached to a connector and together form the base. The number of legs will depend on the size of the table.

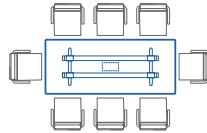
- 3 **Top:** Top structure in plywood chipboard with top layer in: Fenix/HPL/veneer.
- 4 **Electrical set-up:** The flip door is formed by an aluminium frame and a central element in the same finish as the top. It has an opening on both sides and a painted metal cable tray under the top to hold wiring. Optional vertical duct. Electrical outlets are not provided.



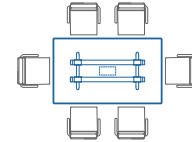
# Dimensions



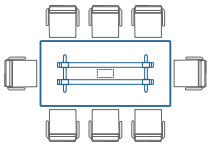
PFL.100 | rectangular table, oval section legs, height 74 cm, 100x200 cm, single sector



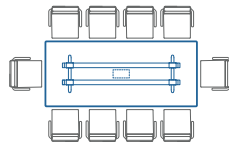
PFL.101 | rectangular table, oval section legs, height 74 cm, 100x240 cm, single sector



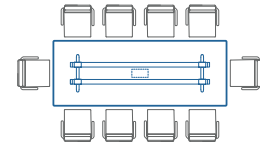
PFL.102 | rectangular table, oval section legs, height 74 cm, 120x200 cm, single sector



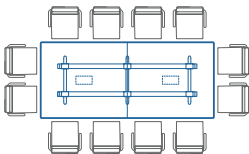
PFL.103 | rectangular table, oval section legs, height 74 cm, 120x240 cm, single sector



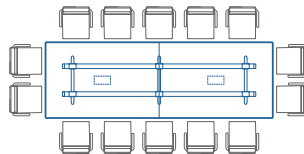
PFL.104 | rectangular table, oval section legs, height 74 cm, 120x280 cm, single sector



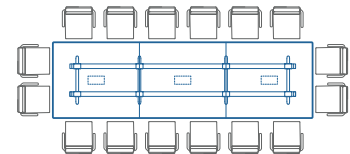
PFL.105 | rectangular table, oval section legs, height 74 cm, 120x320 cm, single sector



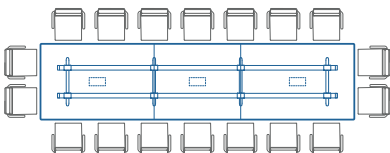
PFL.106 | rectangular table, oval section legs, height 74 cm, 139x318 cm, 2 sectors



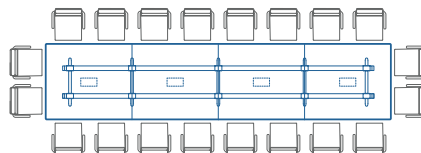
PFL.107 | rectangular table, oval section legs, height 74 cm, 139x418 cm, 2 sectors



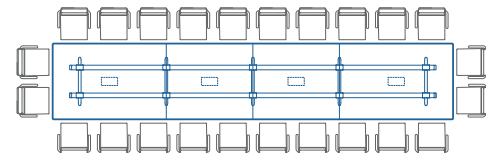
PFL.108 | rectangular table, oval section legs, height 74 cm, 139x477 cm, 3 sectors



PFL.109 | rectangular table, oval section legs, height 74 cm, 139x577 cm, 3 sectors

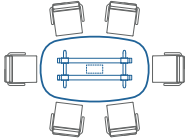


PFL.110 | rectangular table, oval section legs, height 74 cm, 139x636 cm, 4 sectors

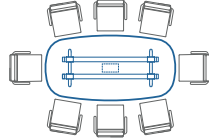


PFL.110 | rectangular table, oval section legs, height 74 cm, 139x736 cm, 4 sectors

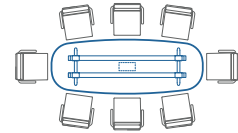




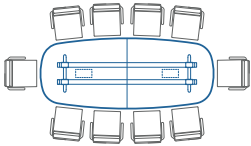
PFL.202 | barrel table, oval section  
legs, height 74 cm,  
120x200 cm, single sector



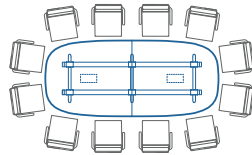
PFL.203 | barrel table, oval section  
legs, height 74 cm,  
120x240 cm, single sector



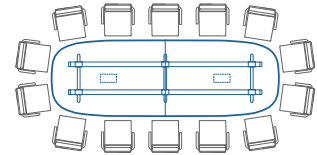
PFL.212 | barrel table, oval section  
legs, height 74 cm,  
100x280 cm, single sector



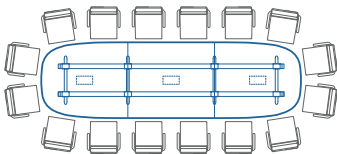
PFL.213 | barrel table, oval section  
legs, height 74 cm,  
130x320 cm, 2 sectors



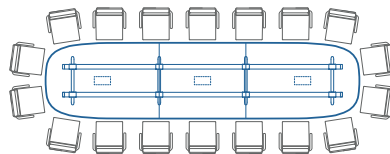
PFL.206 | barrel table, oval section  
legs, height 74 cm,  
139x318 cm, 2 sectors



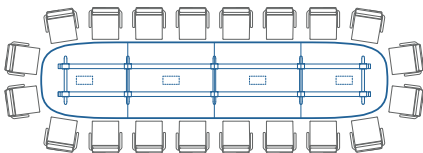
PFL.207 | barrel table, oval section  
legs, height 74 cm,  
139x418 cm, 2 sectors



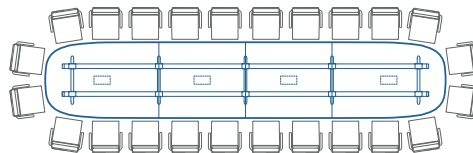
PFL.208 | barrel table, oval section  
legs, height 74 cm,  
139x477 cm, 3 sectors



PFL.209 | barrel table, oval section  
legs, height 74 cm,  
139x577 cm, 3 sectors

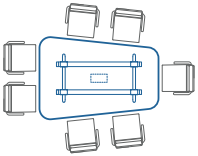


PFL.210 | barrel table, oval section  
legs, height 74 cm,  
139x636 cm, 4 sectors

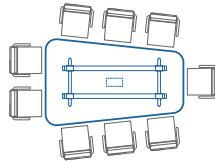


PFL.211 | barrel table, oval section  
legs, height 74 cm,  
139x736 cm, 4 sectors

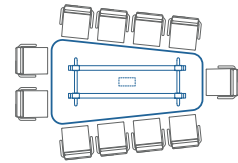




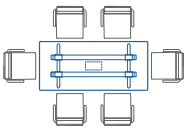
PFL.614 | trapezoidal table, oval section legs, height 74 cm, 220x152x110 cm, single sector



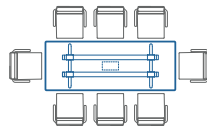
PFL.615 | trapezoidal table, oval section legs, height 74 cm, 255x159x110 cm, single sector



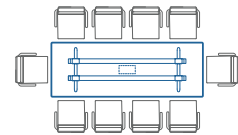
PFL.615 | trapezoidal table, oval section legs, height 74 cm, 280x155x110 cm, single sector



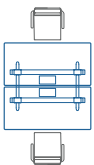
PFL.120 | rectangular table, oval section legs, height 111 cm, 200x90 cm, single sector



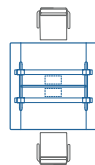
PFL.121 | rectangular table, oval section legs, height 111 cm, 240x90 cm, single sector



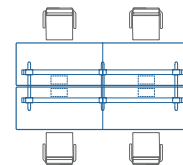
PFL.122 | rectangular table, oval section legs, height 111 cm, 280x100 cm, single sector



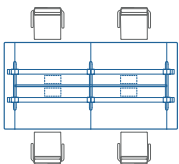
PFL.114 | square bench, oval section legs, height 74 cm, 159x159 cm, 2 sectors



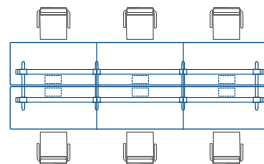
PFL.115 | square bench, oval section legs, height 74 cm, 159x159 cm, 4 sectors



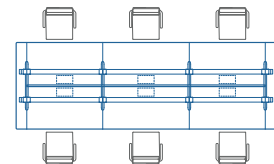
PFL.116 | rectangular bench, oval section legs, height 74 cm, 159x318 cm, 4 sectors



PFL.117 | rectangular bench, oval section legs, height 74 cm, 159x318 cm, 6 sectors



PFL.118 | rectangular bench, oval section legs, height 74 cm, 159x477 cm, 6 sectors



PFL.119 | rectangular bench, oval section legs, height 74 cm, 159x477 cm, 8 sectors





# Colours and finishes

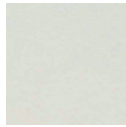
## Top

### HPL black/full core



100 | White

### Fenix black/full core



100 | White



115 | Black



121 | Light grey



122 | Dark grey



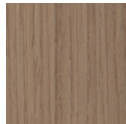
123 | Warm grey

### Melamine

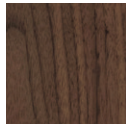


100 | White

### Veneer



005 | Oak



043 | American  
black walnut

**Electrification:** Flip door matching the top finish.

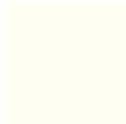
## Legs

### Anodized aluminium



AG01 | Natural grey

### Painted aluminium



100 | White



115 | Black



121 | Light grey



122 | Dark grey

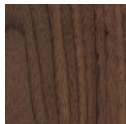


123 | Warm grey

### Covered aluminium



005 | Oak



043 | American  
black walnut



—  
icf-office.it  
■

**ICF**



—  
icf-office.it  
■

**ICF**